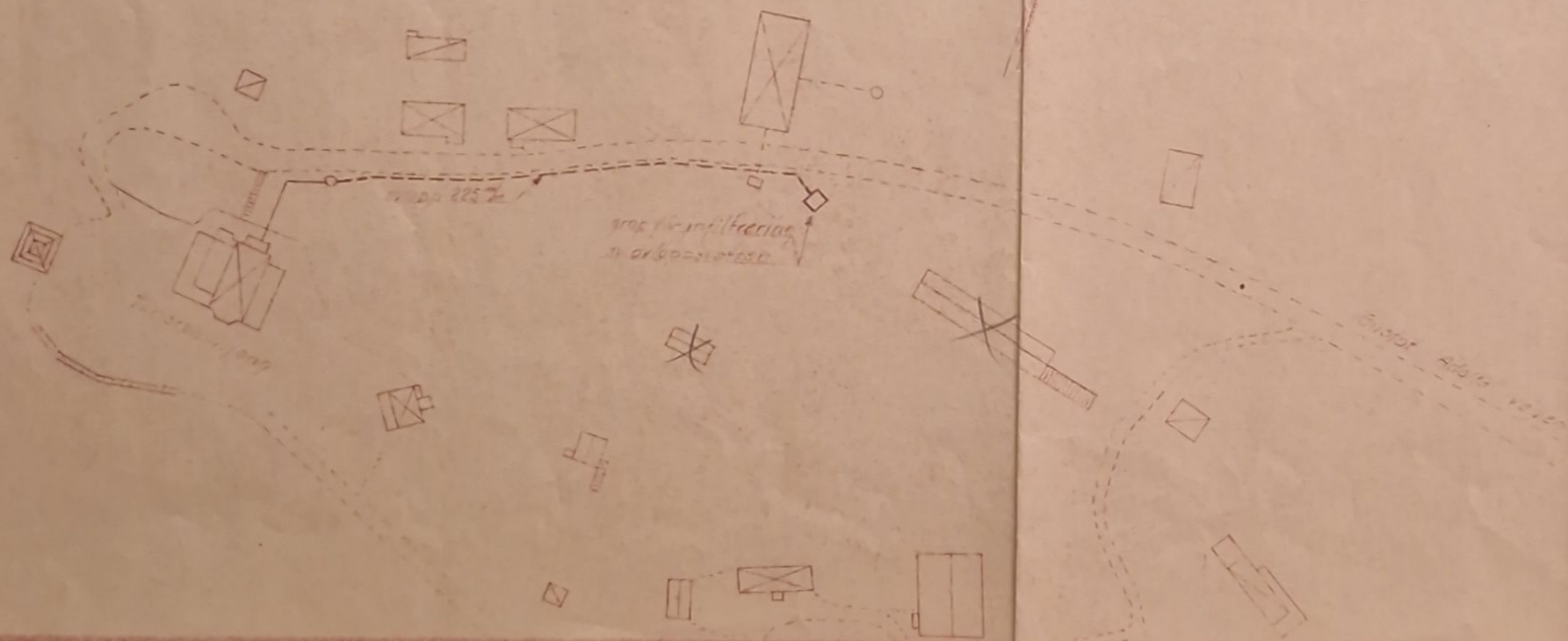
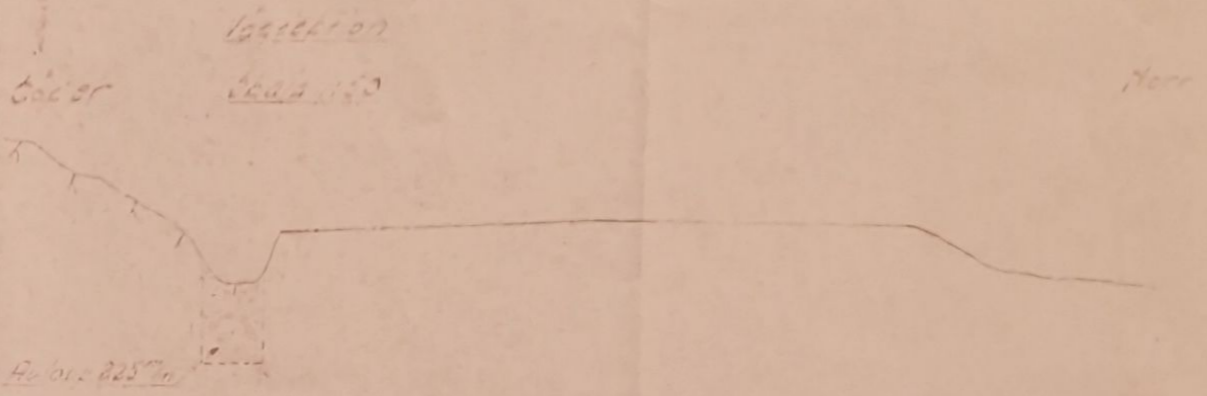
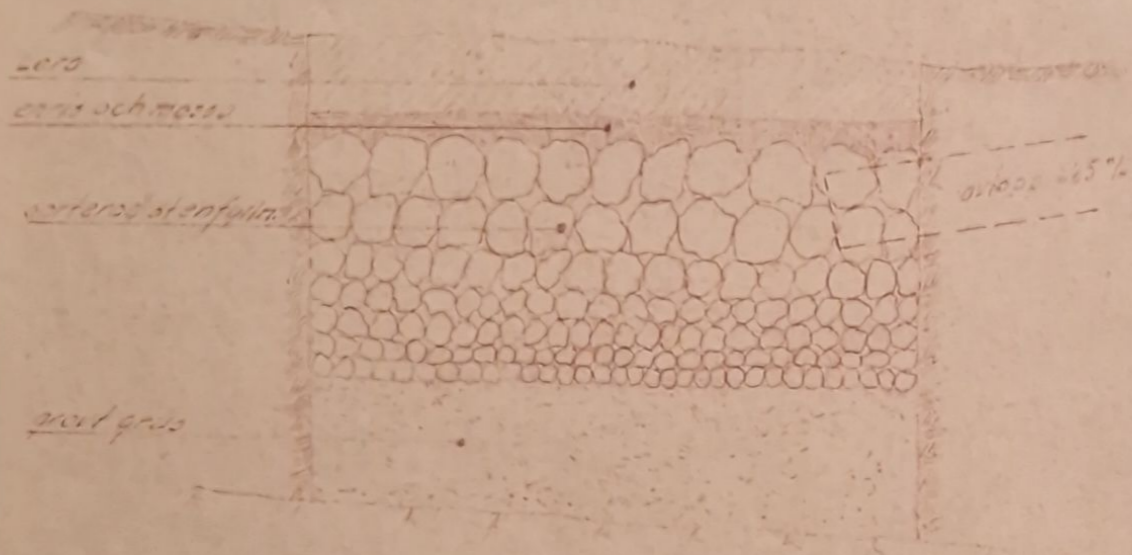


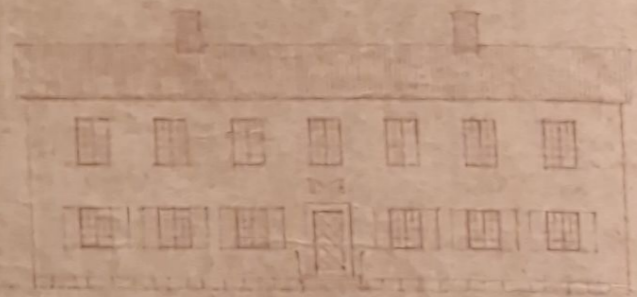
Spåreringsplan för avloppsvatten

Blad 1/20

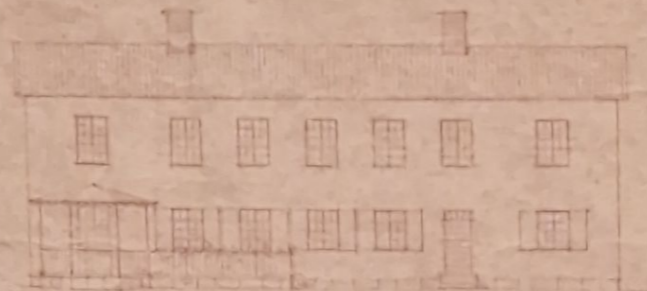


SUNDSVALLS STADS UYGNADSWÄRDE	
RIT. AV	
GODKÄND	
SKALA	

Antikmuseum i St. Matsberg, Sundsvall



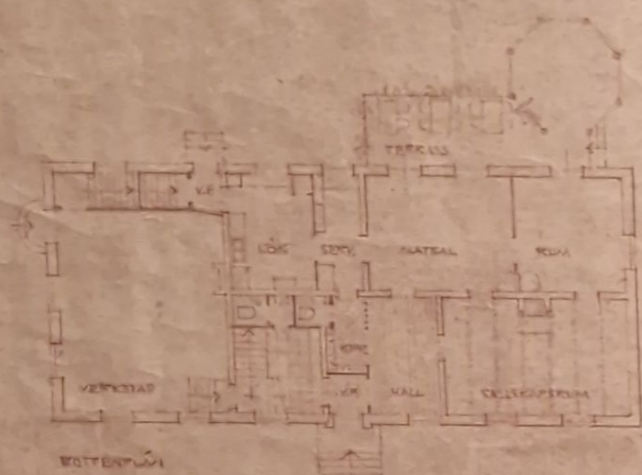
FASAD MOT ÖST



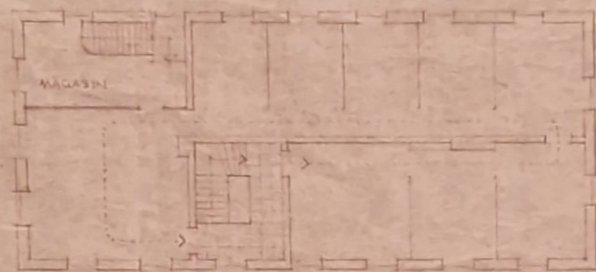
FASAD MOT VÄSTER



FASAD MOT NÖRRE



BOTTENPLAN



PLAN I TR
utställningslokaler med skärmöppning



Skala 1:200

A. HAMRIN
ARKITEKT S.A.B.
SUNDSVALL
DEN 13 7 1912

EVNTVERSMUSEUM Å N. STADSBERGET, SUNDSVALL

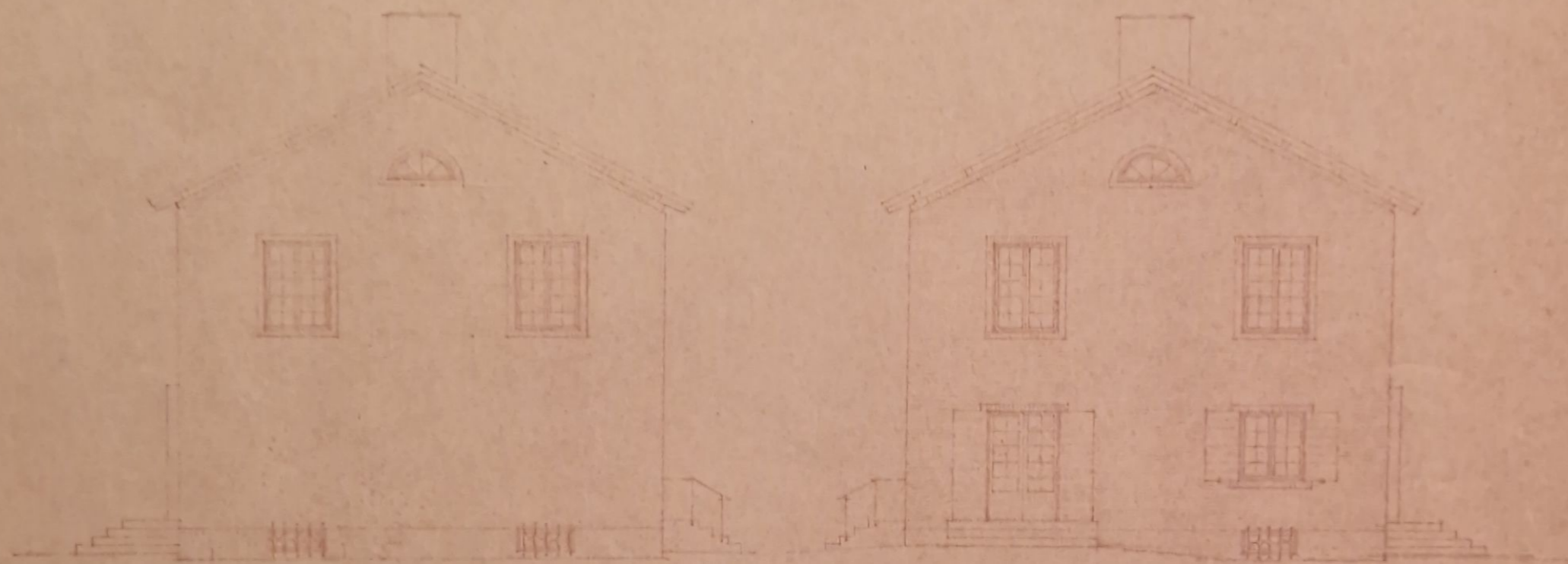


FASAD NÖR ÖSTER

0 1 2 3 4 5 6 7 8 9 10

A. HAMRIN
ARKITEKT BYÅND
SUNDSVALL
DEC 7. 1943

HÄRTENSKOLEN Å N. STADSBERGET, SUNDSVALL



FASAD MOT NÖR.

FASAD MOT SÖDER.

1892

F

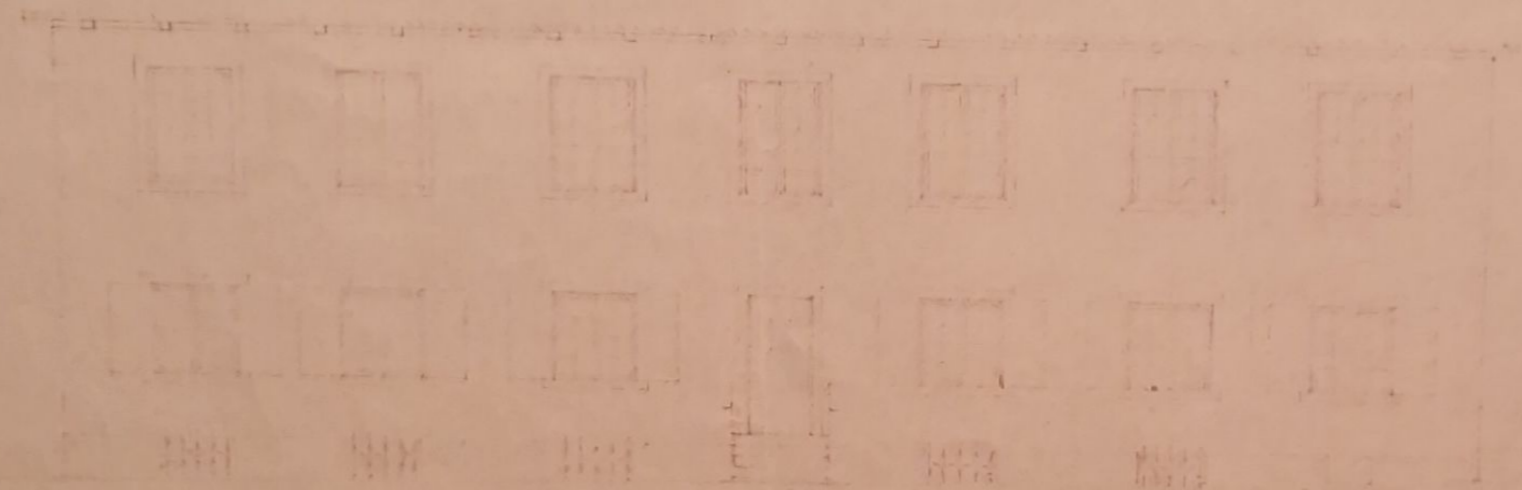
P

P

9 M

A. HAMRIN
ARKITEKT O. S. B. O.
SUNDSVALL
DEN 4 I 1892
KONST 1892

THE UNIVERSITY OF CHICAGO



PLAN OF BUILDING

1 2 3 4 5 6 7

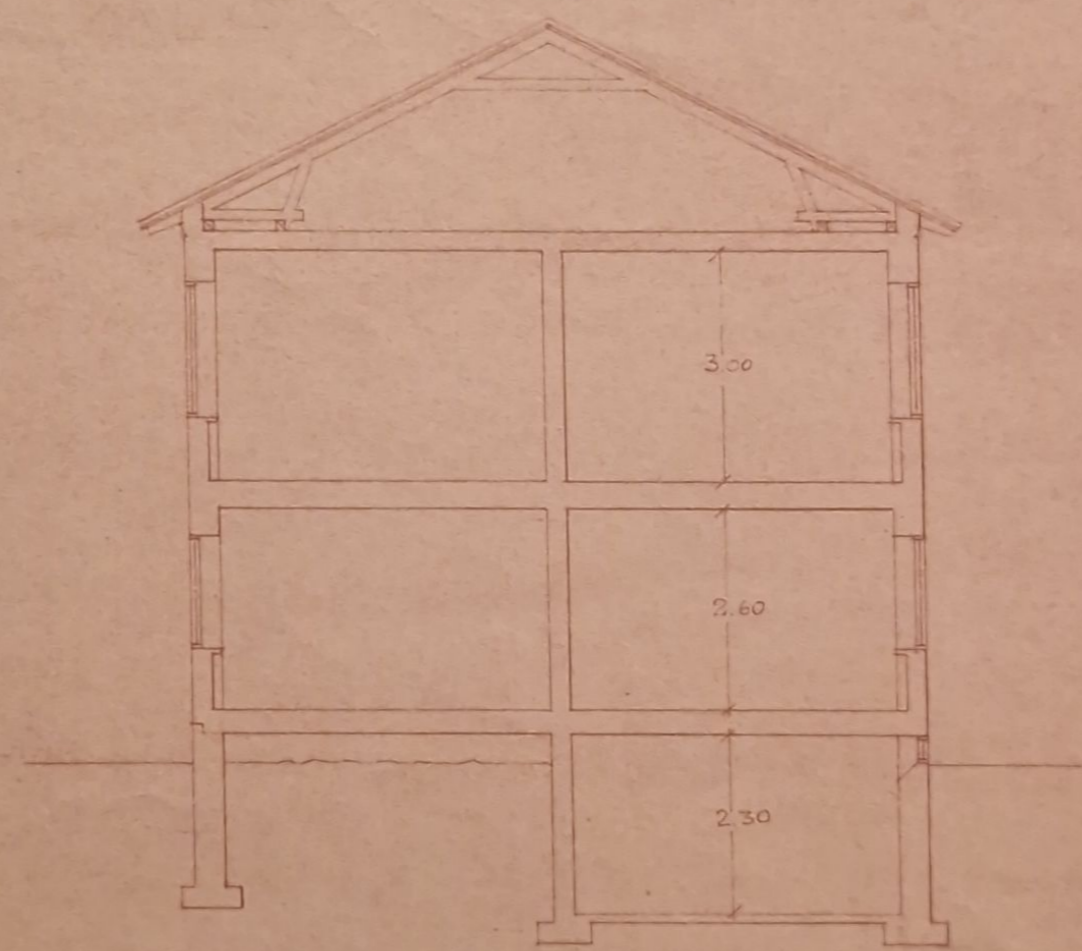
UNIVERSITY OF CHICAGO
ARCHITECTURAL RECORD
1913

HANTVERKSMUSEUM *å N Stadsberget, Sundsvall.*

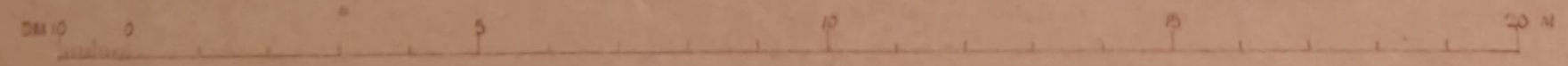
N:o 240. År 1942 den *2/12* blev denna ritning av Byggnadsnämnden i Sundsvall fastställd; betygar

Lösen: En krona.

Ex officio:
J. H. H.

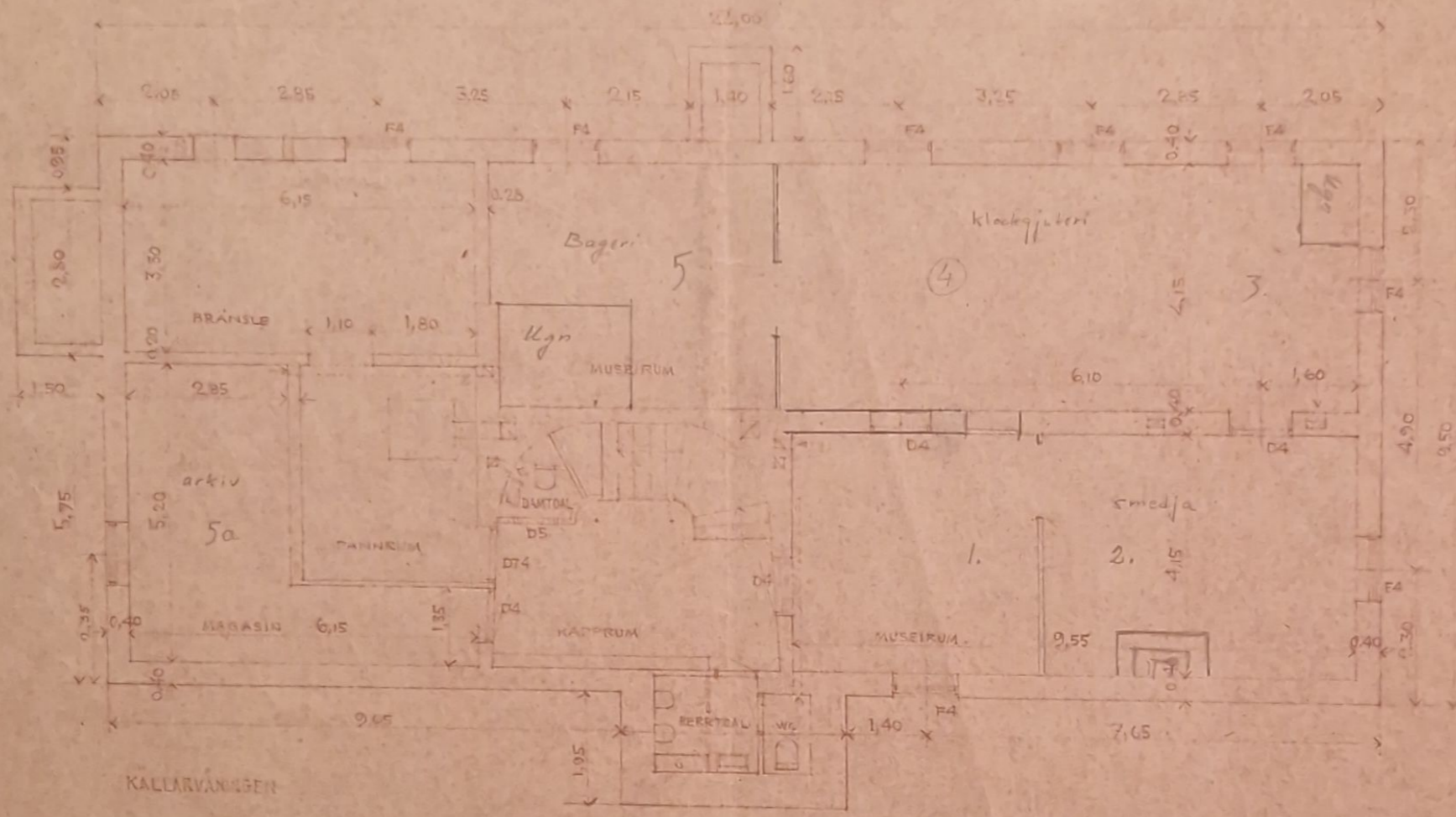


SEKTION



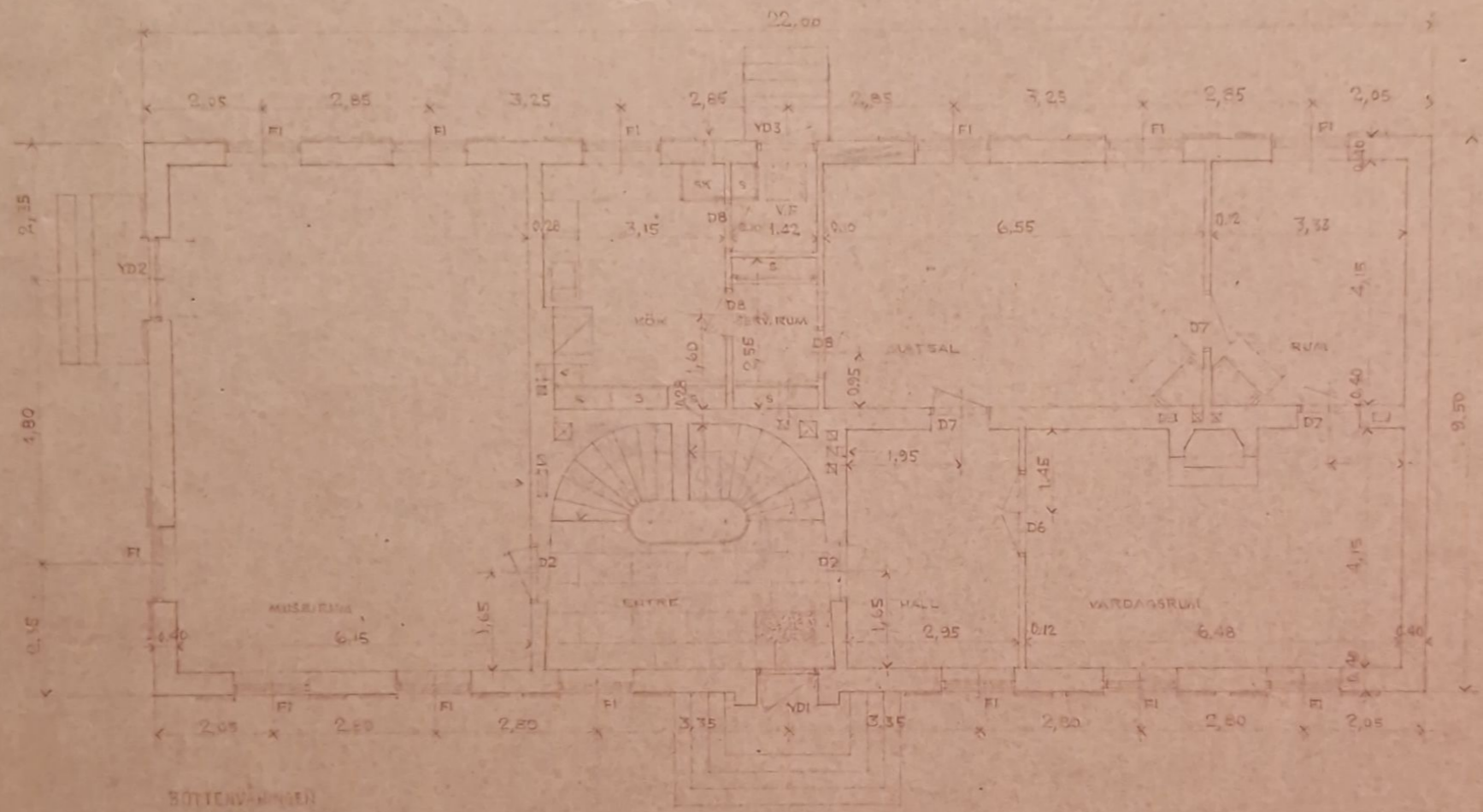
A. HAMRIN
ARKITECT
SUNDSVALL
DEN 17. XI. 1942

7 ex.
1 omg. till Amunens Forsberg
Riksmuseum.
+ dessa kopior.



A. HAMRIN
ARKTENT 3 2 2
SUNDSVALL
DEN 4 II 1948
ANDRA 16-18 1948

GÄSTVERNSMUSEUM A. N. STADSBERGET, SUNDSVALL



A. HAMRIN
 ARCHITECT SUNDSVALL
 DEN 7-II-1913
 ANDRÅ 1913 12/13

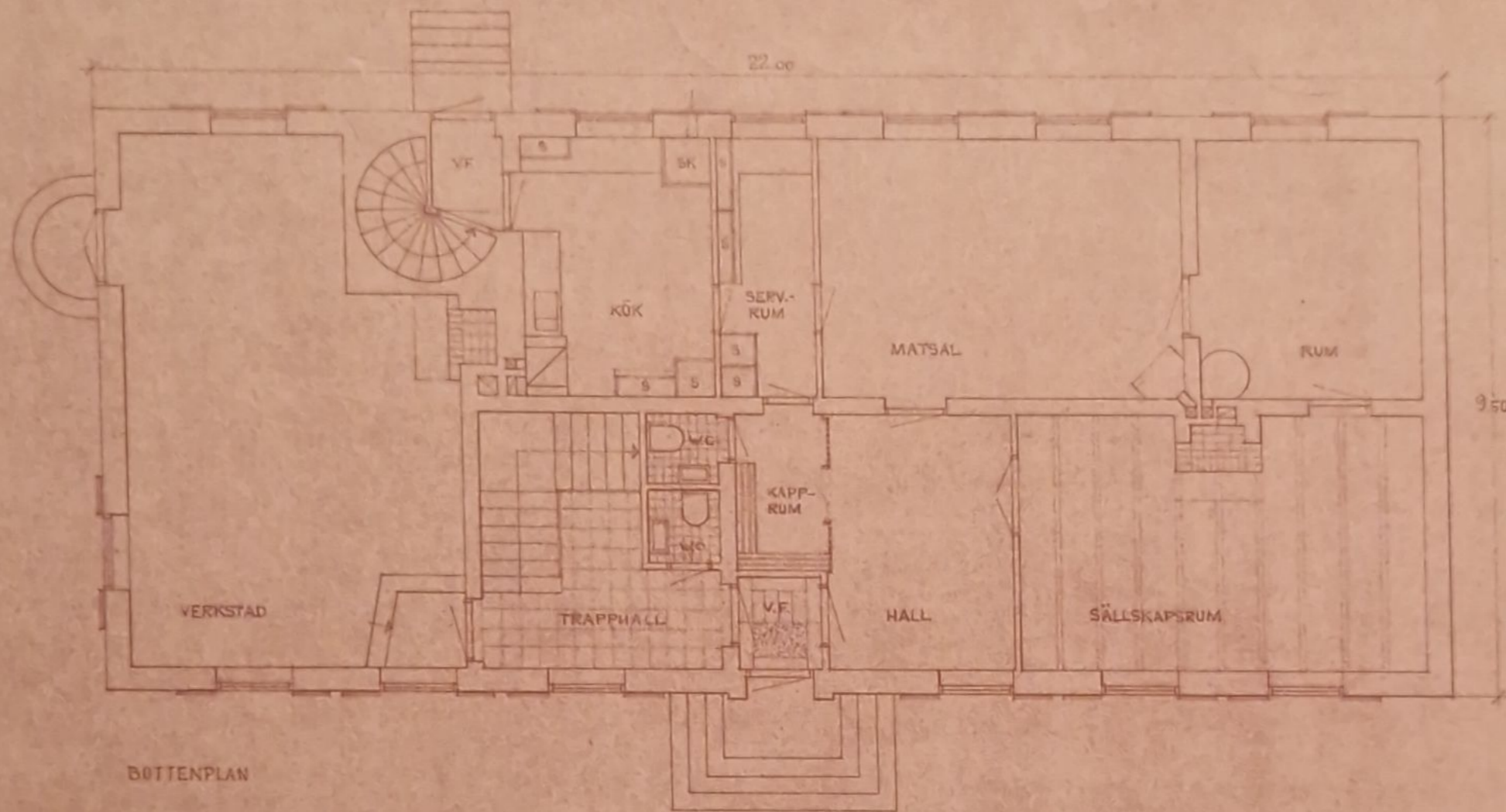
HANTVERKSMUSEUM *å N. Stadsberget, Sundsvall*

N:o 240. År 1942 den 2/12 blev
denna ritning av Byggnadsnämnden
i Sundsvall fastställd; betygar

Lösen: En krona.

Ex officio:

Junt Åhus

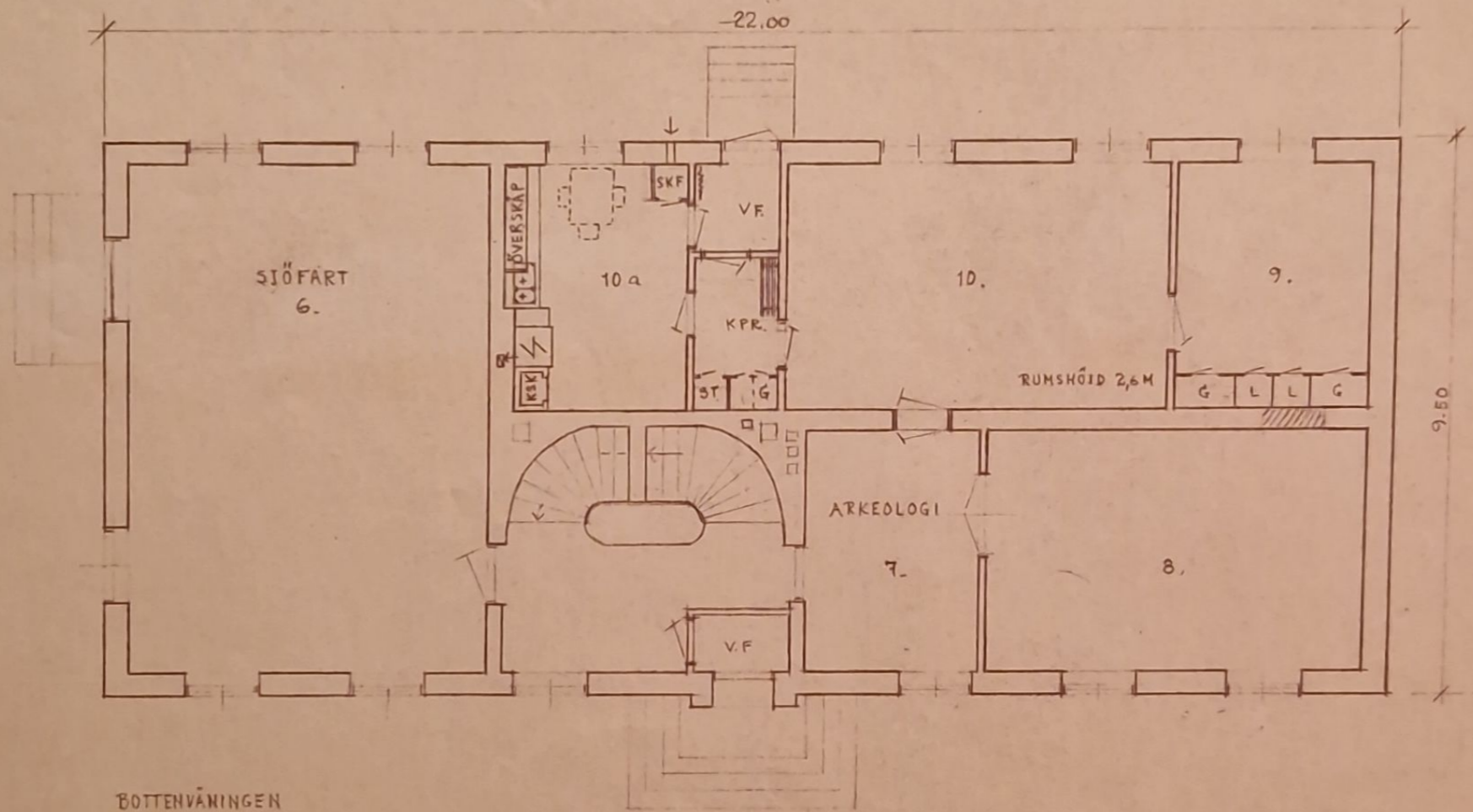


BOTTENPLAN



A. HAMRIN
ARKITECT & INGENJÖR
SUNDSVALL
DEN 17 3 1942

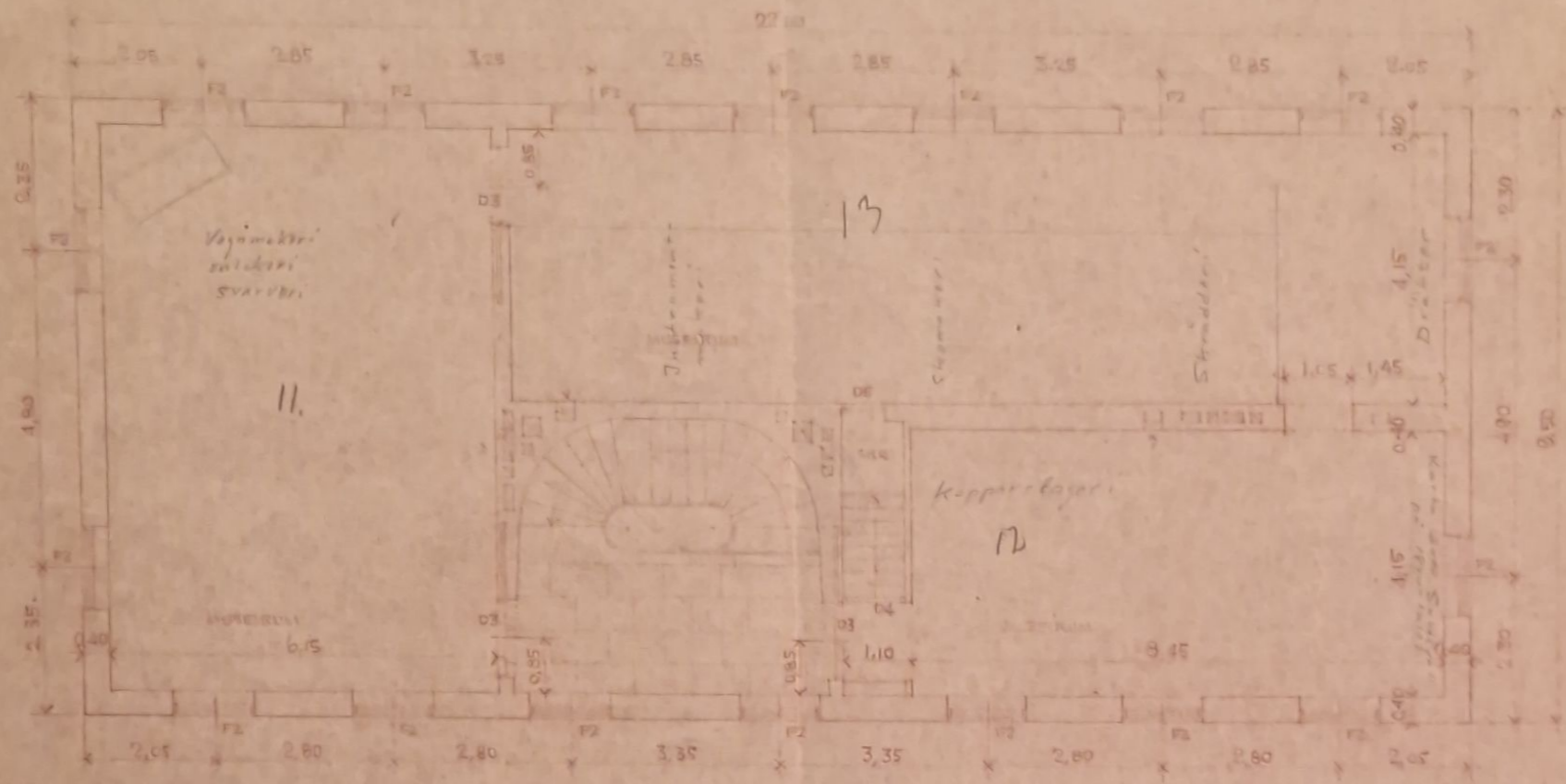
HANTYERKSMUSEUM Å N. STADSBERGET, SUNDSVALL



BOTTENVÅNINGEN
SKALA 1:100

6 kopian

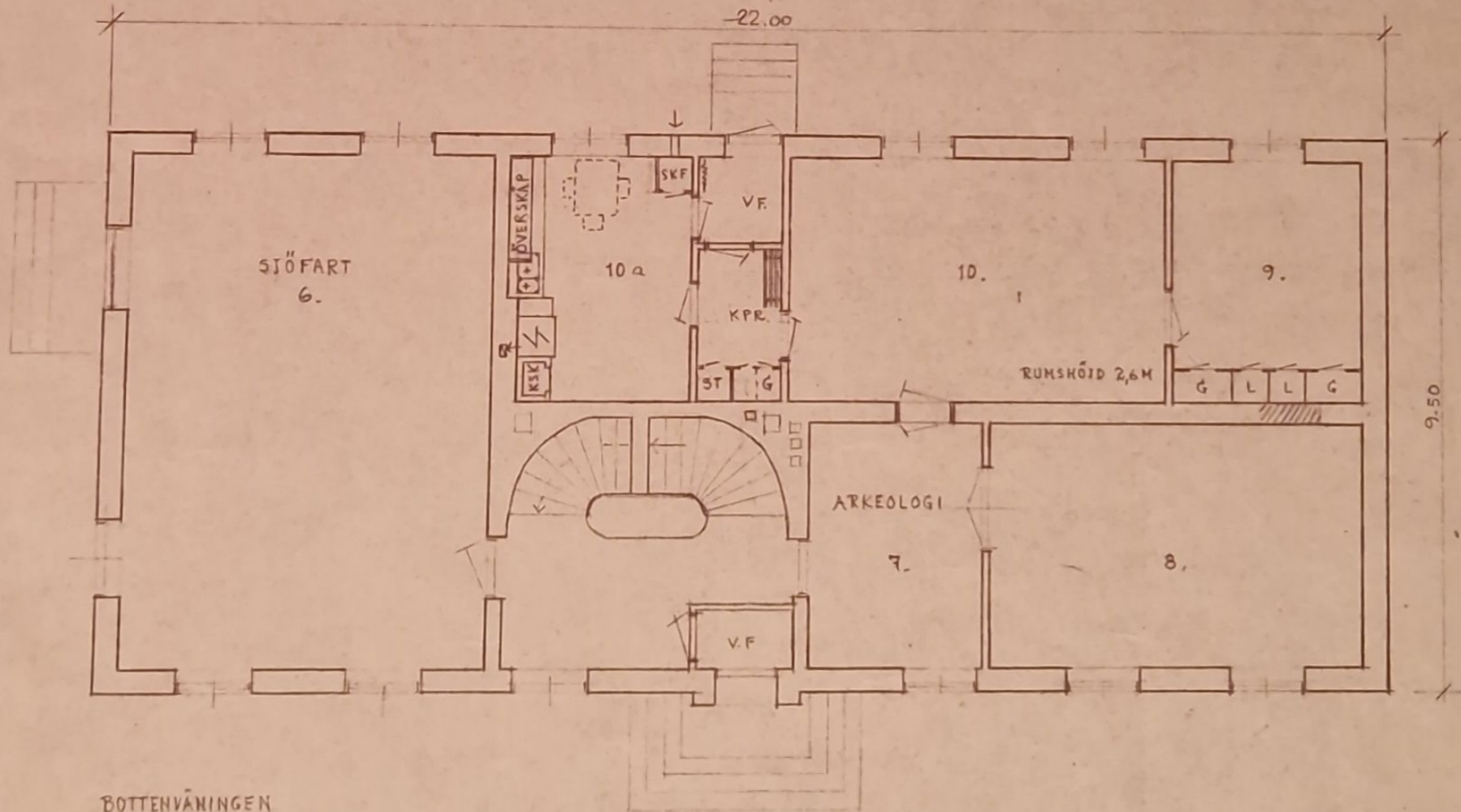
PLANEN FÖR BILLAGG I N. STADSPROJEKT I BUNDSVALL



VÄRDE 1 M

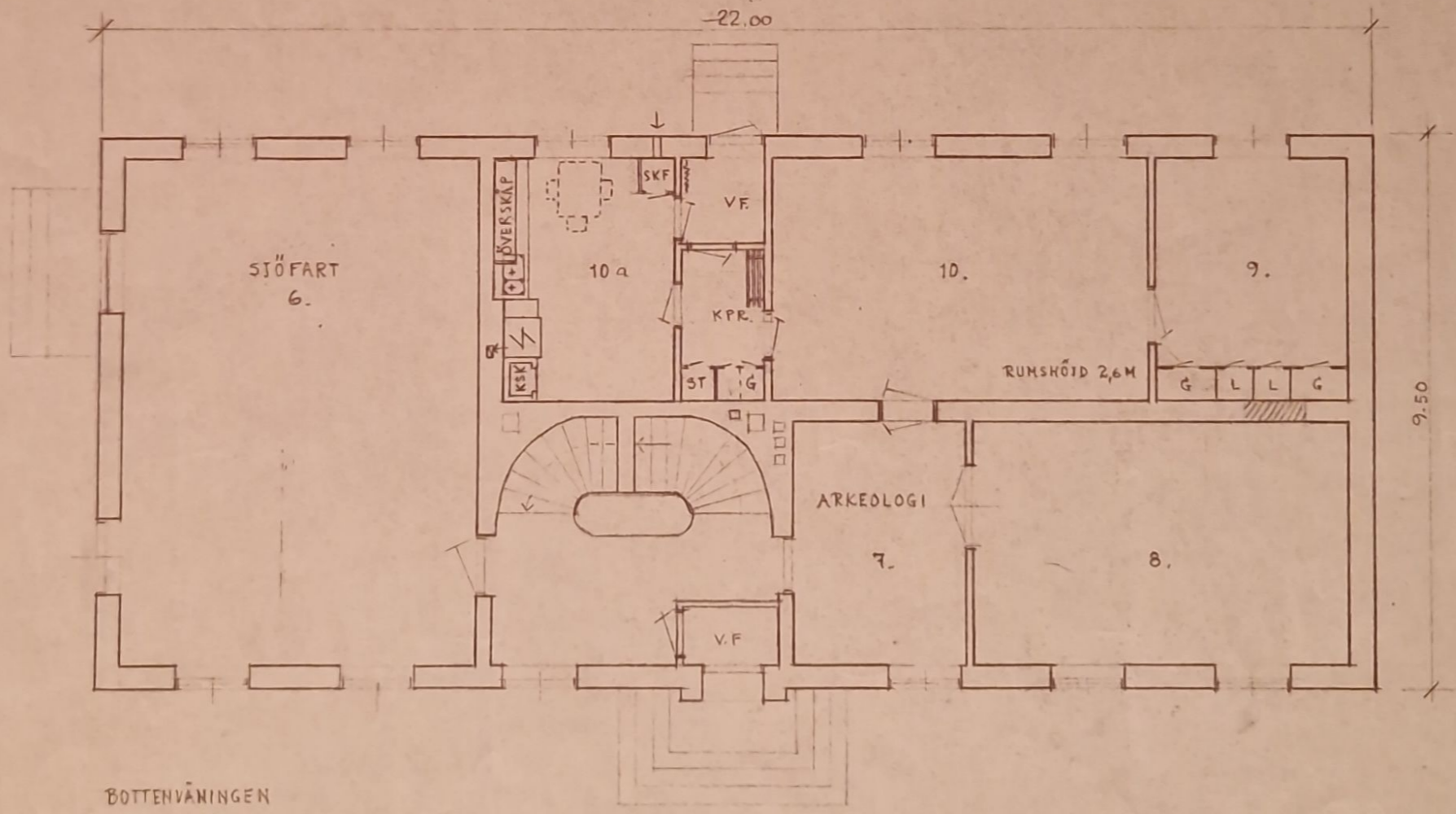
A. HAMRIN
 SUNDSVALL
 1912

HANTYERKSMUSEUM Å N. STADSBERGET, SUNDSVALL



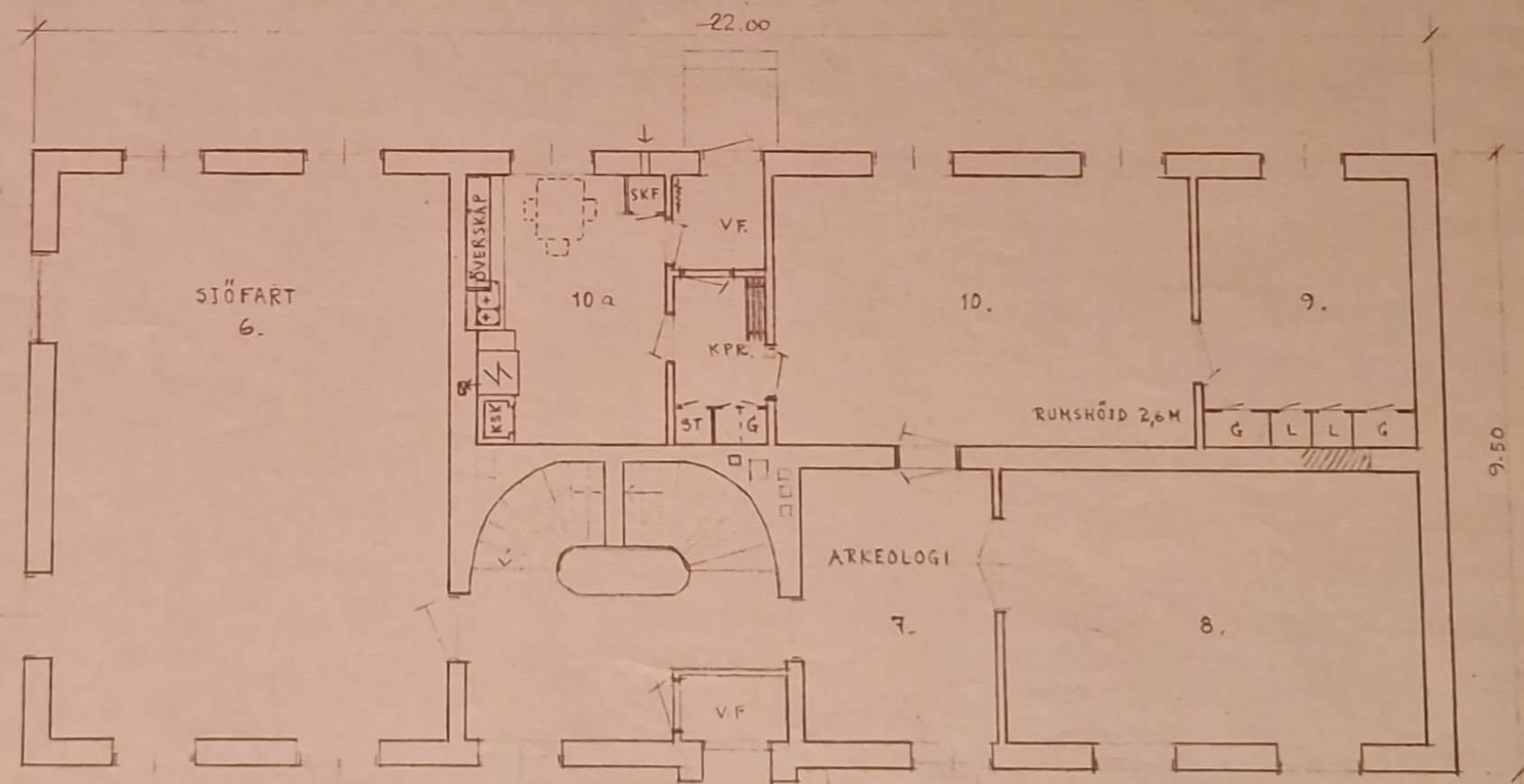
BOTTENVÅNINGEN
SKALA 1:100

HANTYERKSMUSEUM Å N. STADSBERGET, SUNDSVALL



BOTTENVÄNINGEN
SKALA 1:100

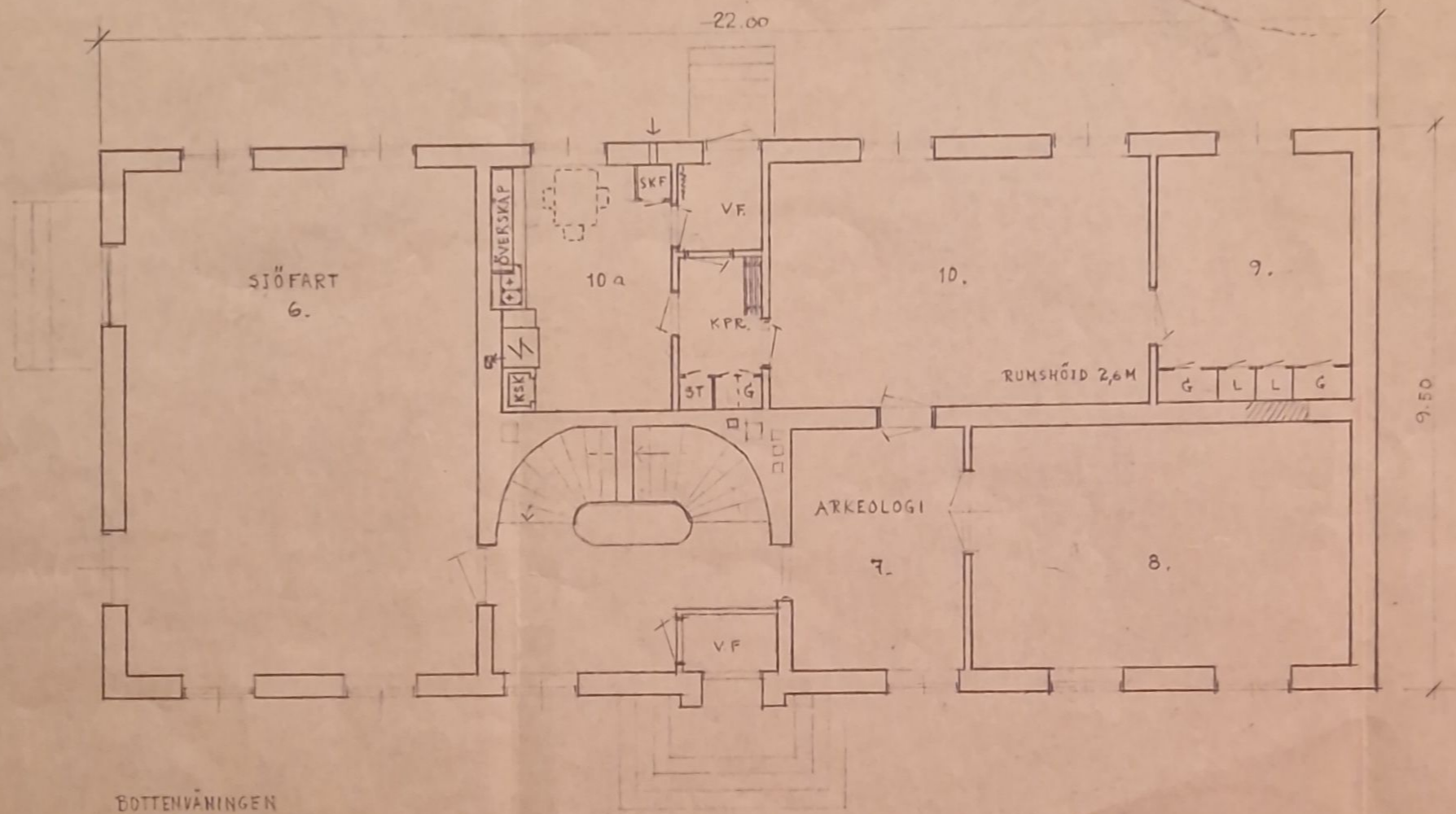
HANTYERKSMUSEUM Å N. STADSBERGET, SUNDSVALL



BOTTENVÅNINGEN
SKALA 1:100

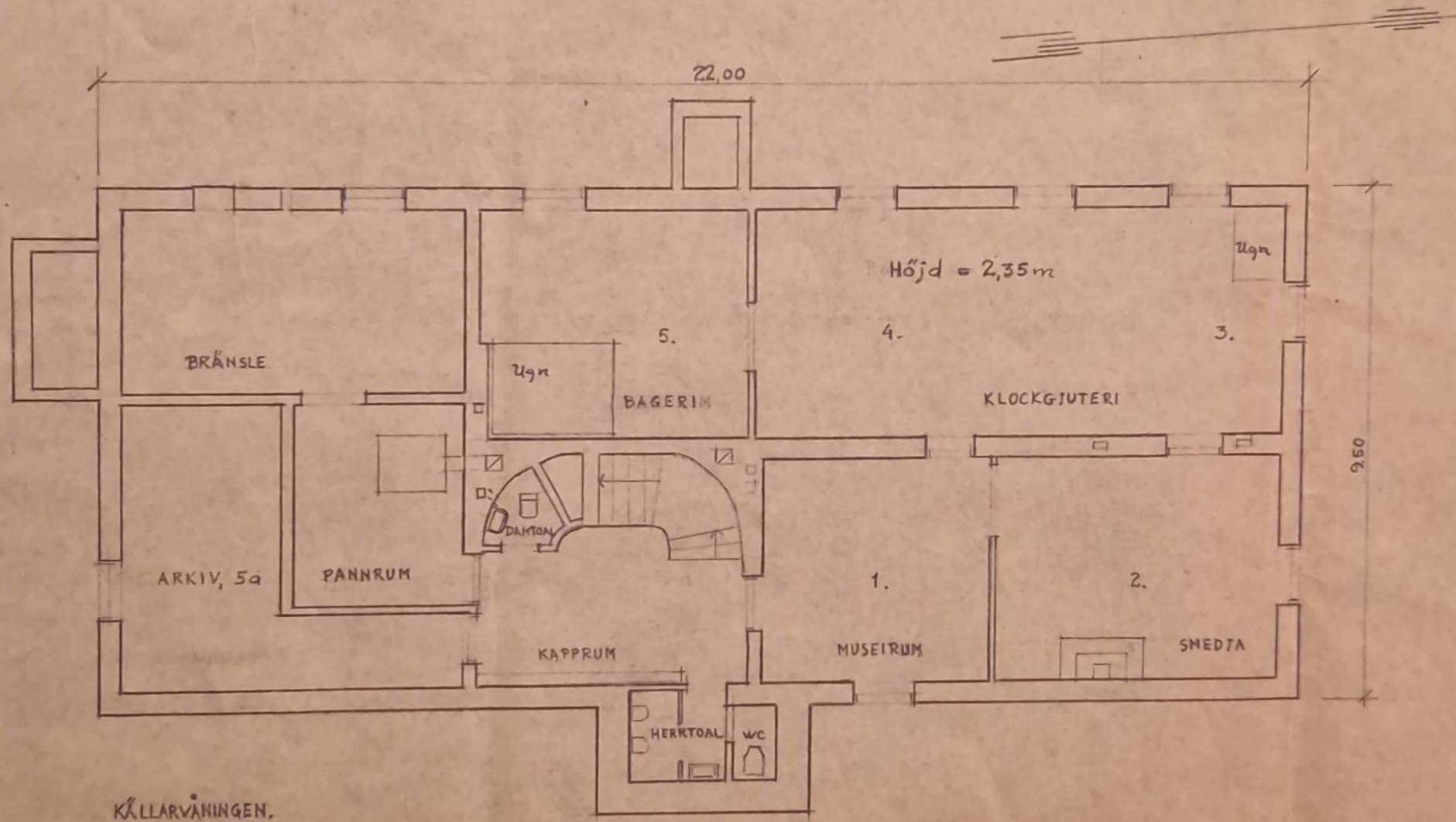
1:3

HANTYERKSMUSEUM Å N. STADSBERGET, SUNDSVALL



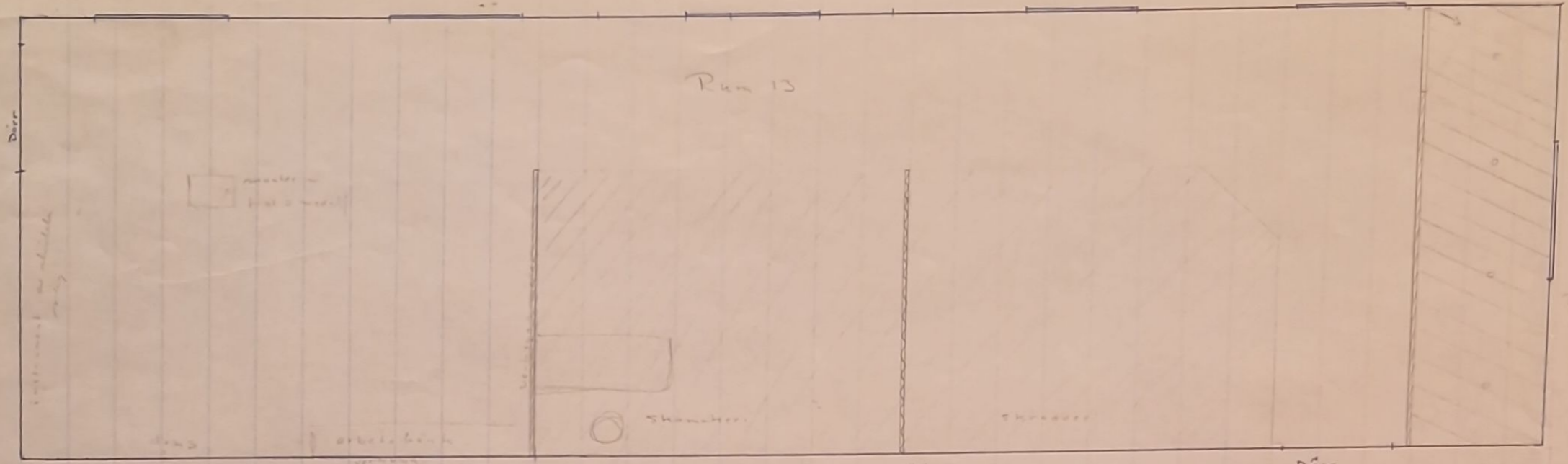
BOTTENVÅNINGEN
SKALA 1:100

HANTVERKSMUSEUM Å N. STADSBERGET. SUNDSVALL



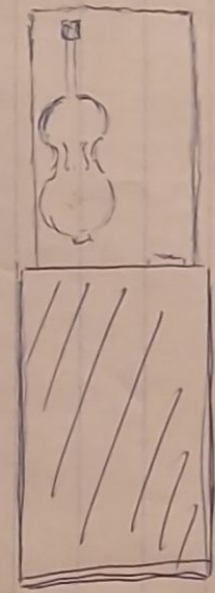
KÄLLARVÅNINGEN.
SKALA 1:100

Raum 11



Handwritten notes in the top right corner, possibly describing the room's layout or materials.

Handwritten notes on the right side of the main drawing, providing additional details about the room's features.



Handwritten notes below the main drawing, including an arrow pointing upwards.

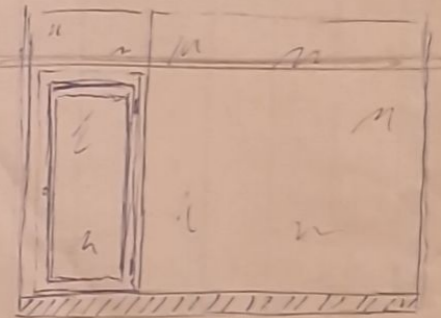
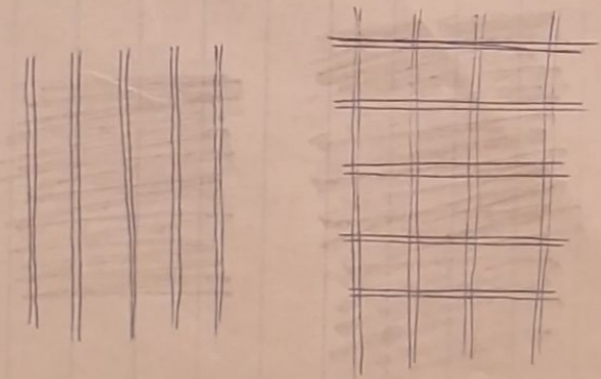
Handwritten text: "Platte ca 7 x 2,7 m, 0,1 m hoch 2 fassbare ... (mit ...)"

Dürr

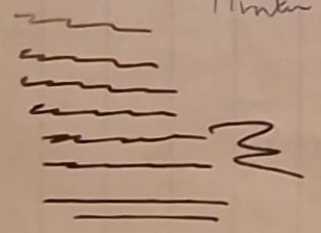
Handwritten notes on the right side of the page, below the main drawing.

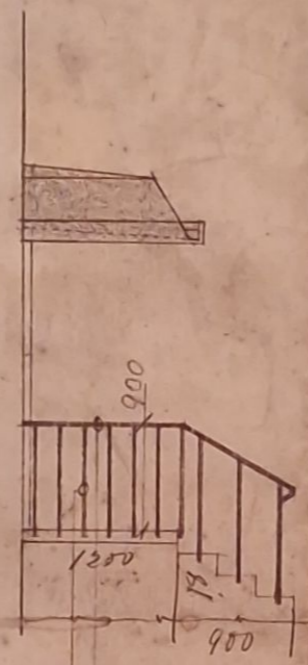
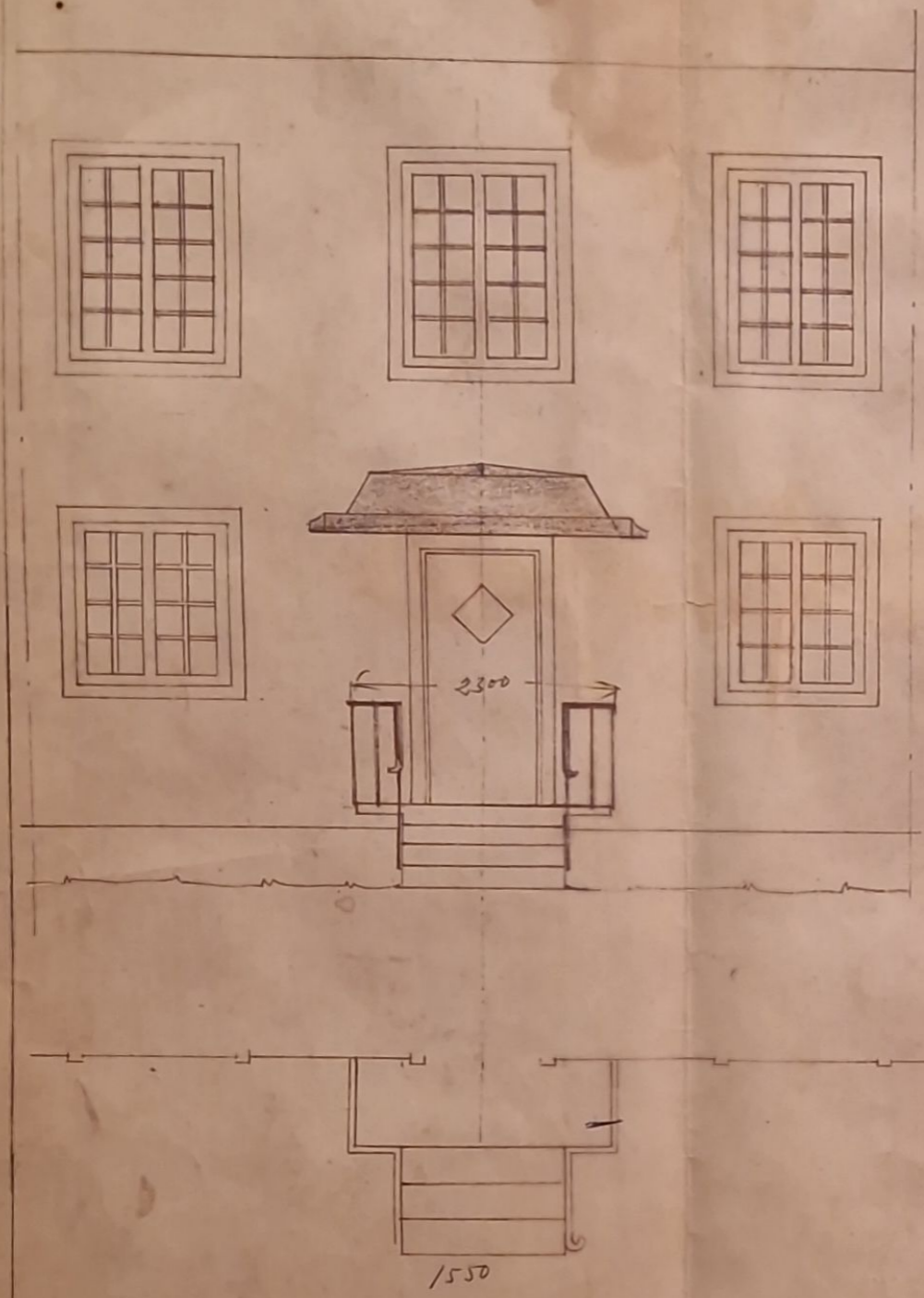
A small handwritten symbol or mark.

Handwritten text: "Möbel"

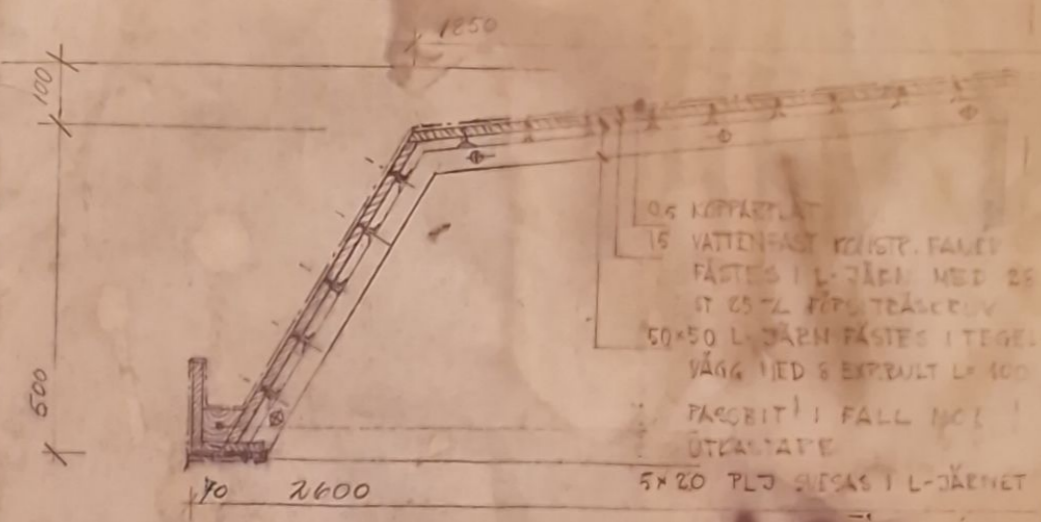


Handwritten text: "Dürr n. ... mit Glas" and other notes describing the window or door.

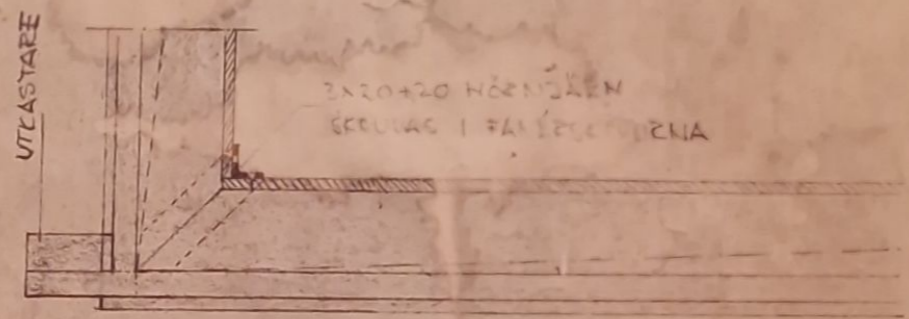




15x50 PLJ FÄSTES I VÄGG
 MED 12% EXP.BOLT L 125
 10x30 PLJ INGJUTES I BROPLANET 100



DETALJ VID VÄGG 1:10



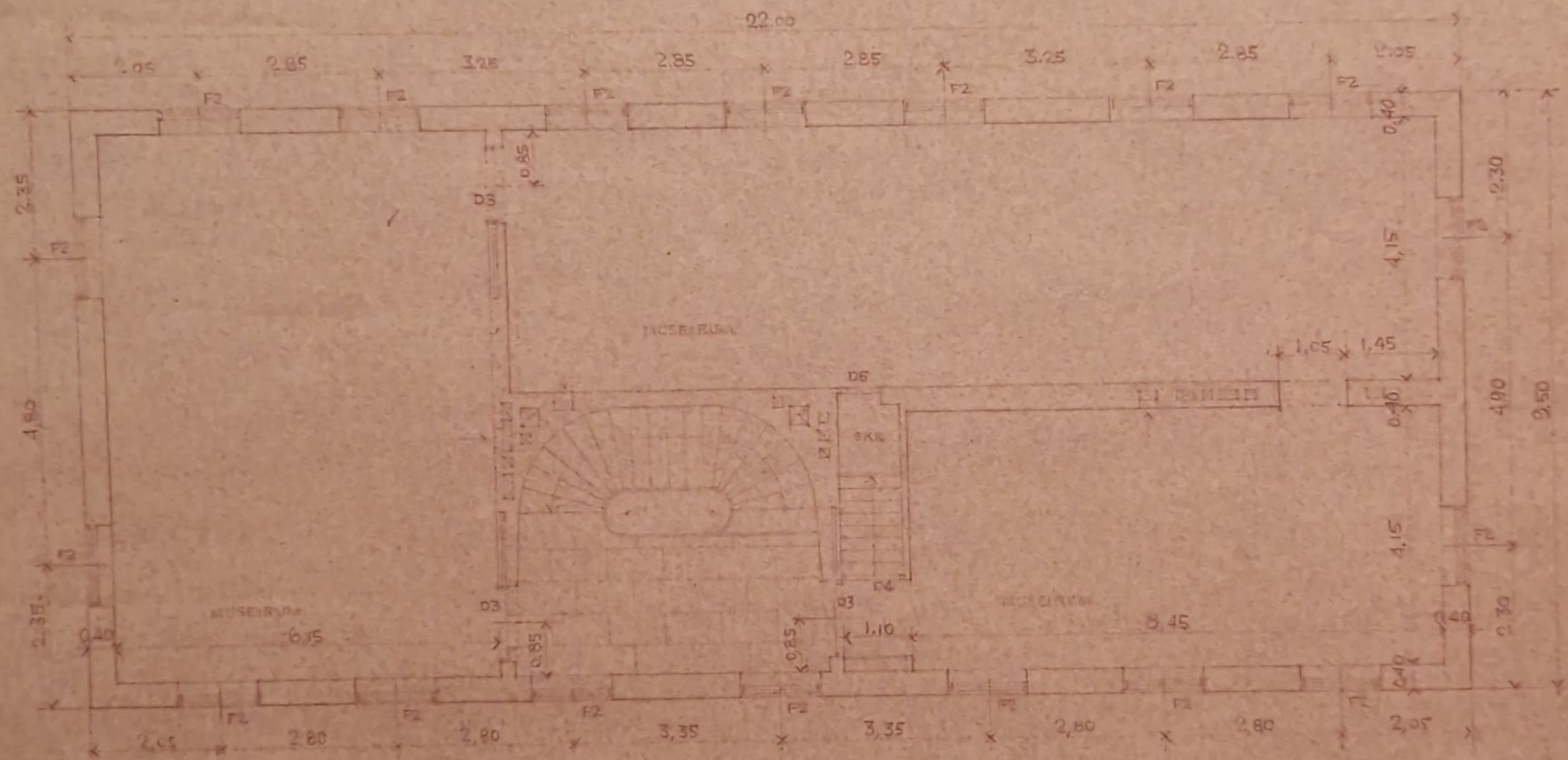
DETALJ VID HÖRN 1:10
 SETT UPPIFRÅN

BYGGNADSLÖV
 sta 198/72
 20 DEC 1972
 SUNDSVALLS BYGGNADSNÄMNE

SRK PLAN VD
 SUNDSVALL
 Ink 20 DEC 1972
 dnr

HANTVERKS MUSEET, SUNDSVALL
 SKÄPNTAK ÖVER VÄSTRA ENTREN.
 SKALA 1:50
 SUNDSVALL 721119
 Lennart Ringmar

FÄRVERKSMUSEUM A. N. STADSBERGET, SUNDSVALL



VÅNINGEN I TR.

A. HANRIN
 ARKITEKT OCH
 SUNDSVALL
 DEN 27 1972
 LINDA 1:200