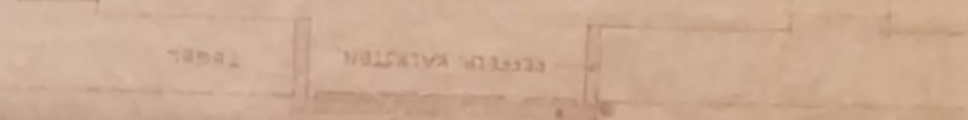


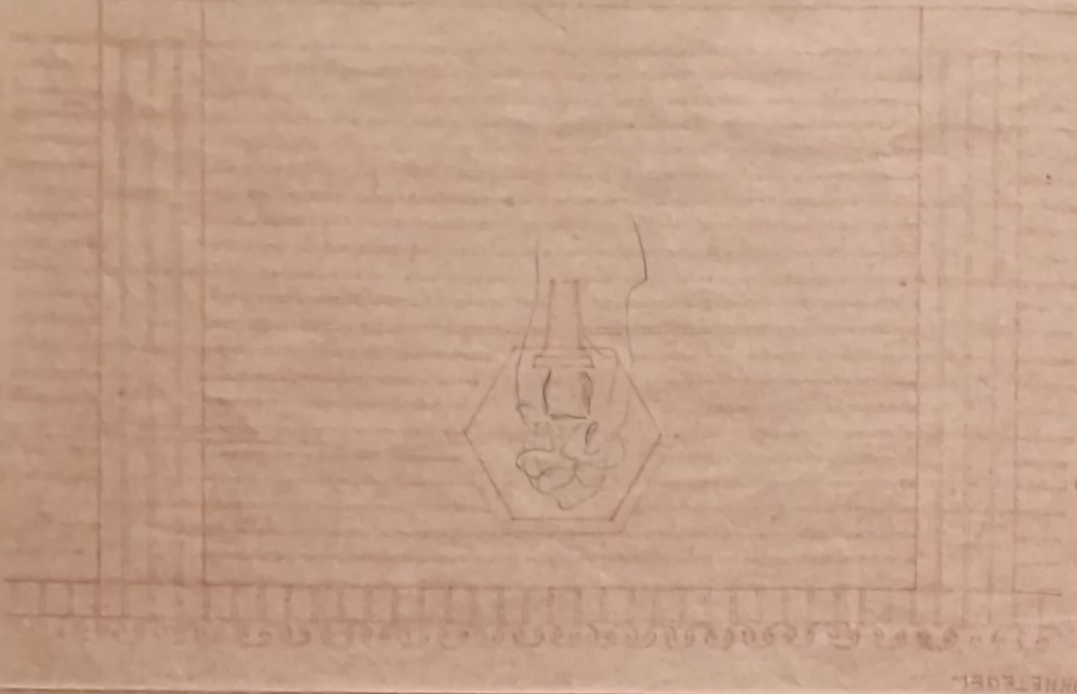
Architectural details and notes in the top left corner, including a small drawing of a decorative element.

Architectural details and notes in the top center, including a small drawing of a decorative element.

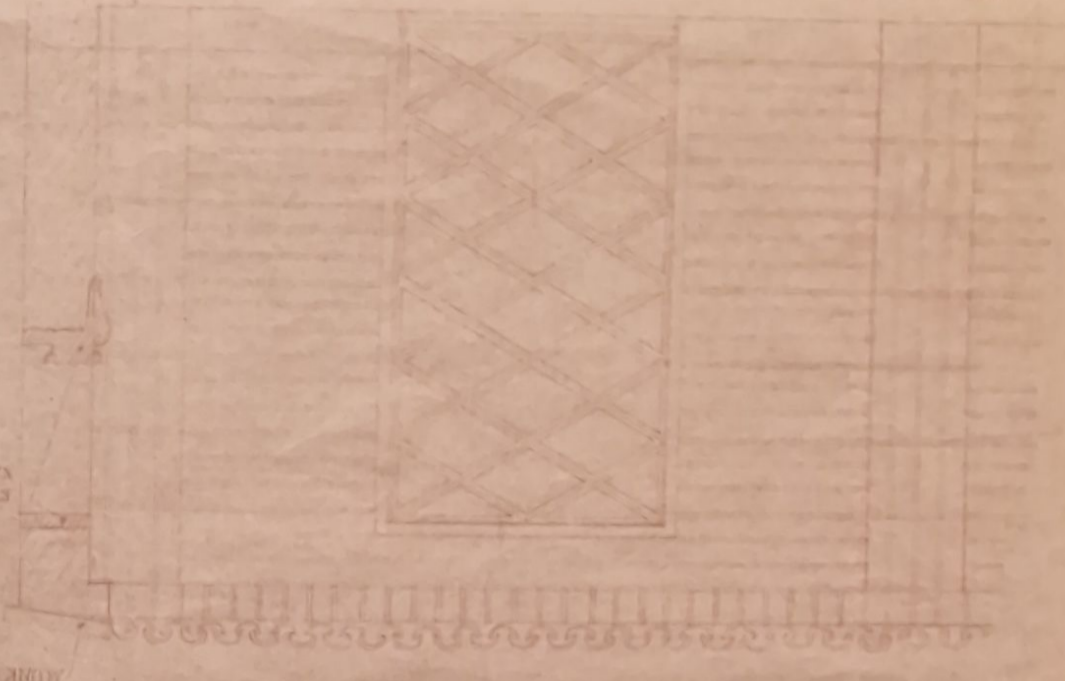
PLAN



DETAIL VID B.



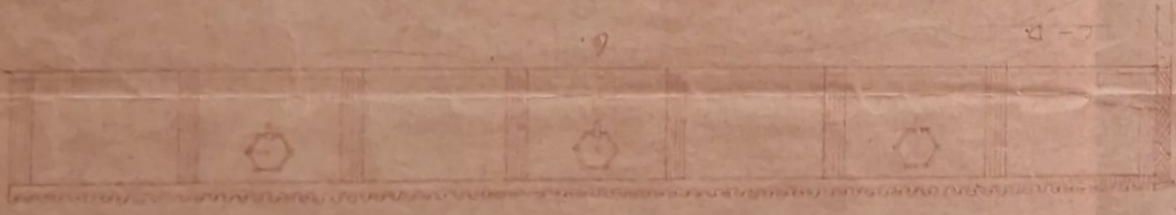
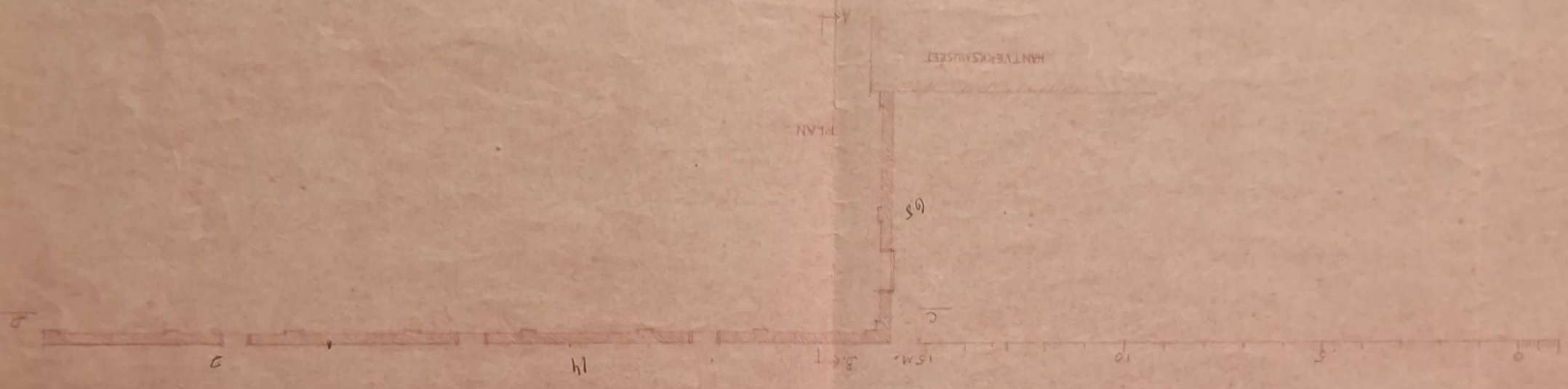
DETAIL VID D.



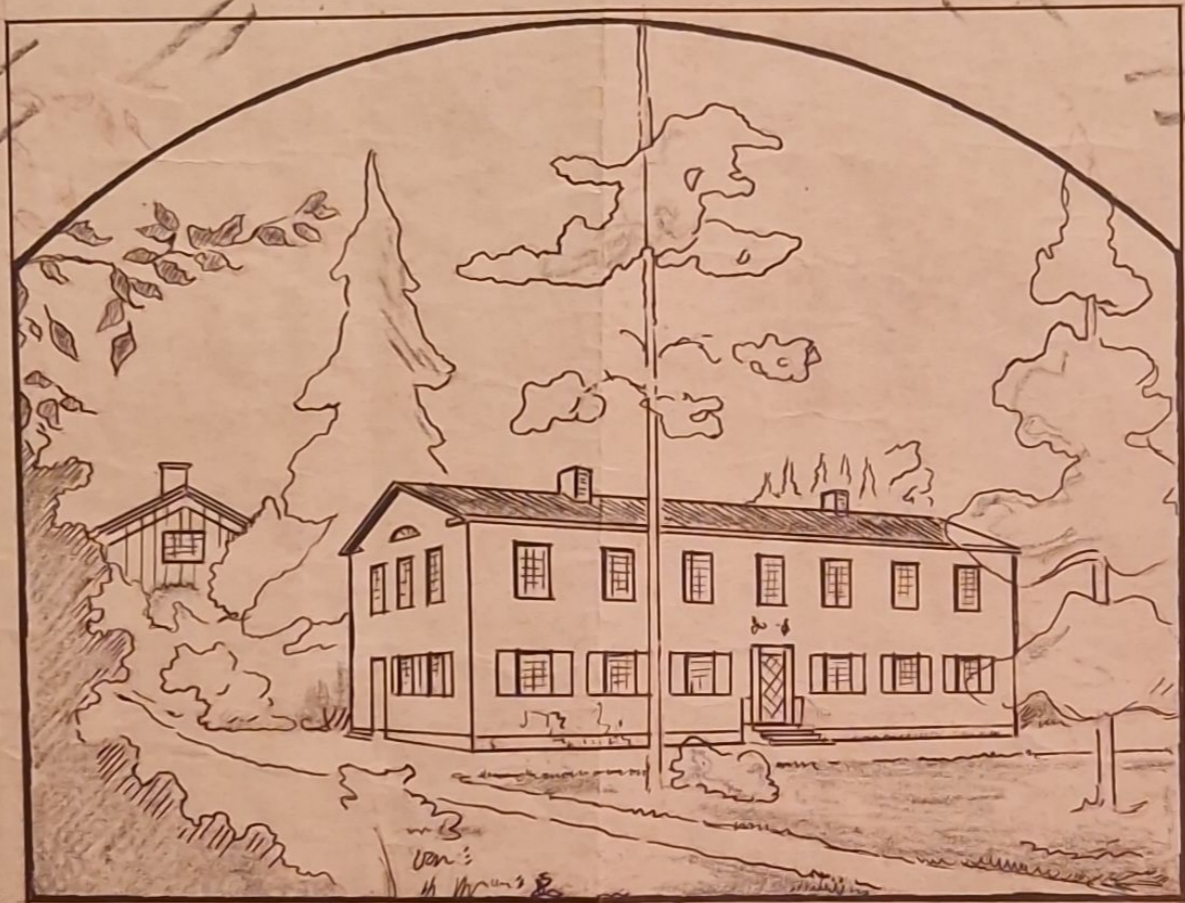
MUR - OH KONNETZEL

HANTERKAMMEREI

PLAN



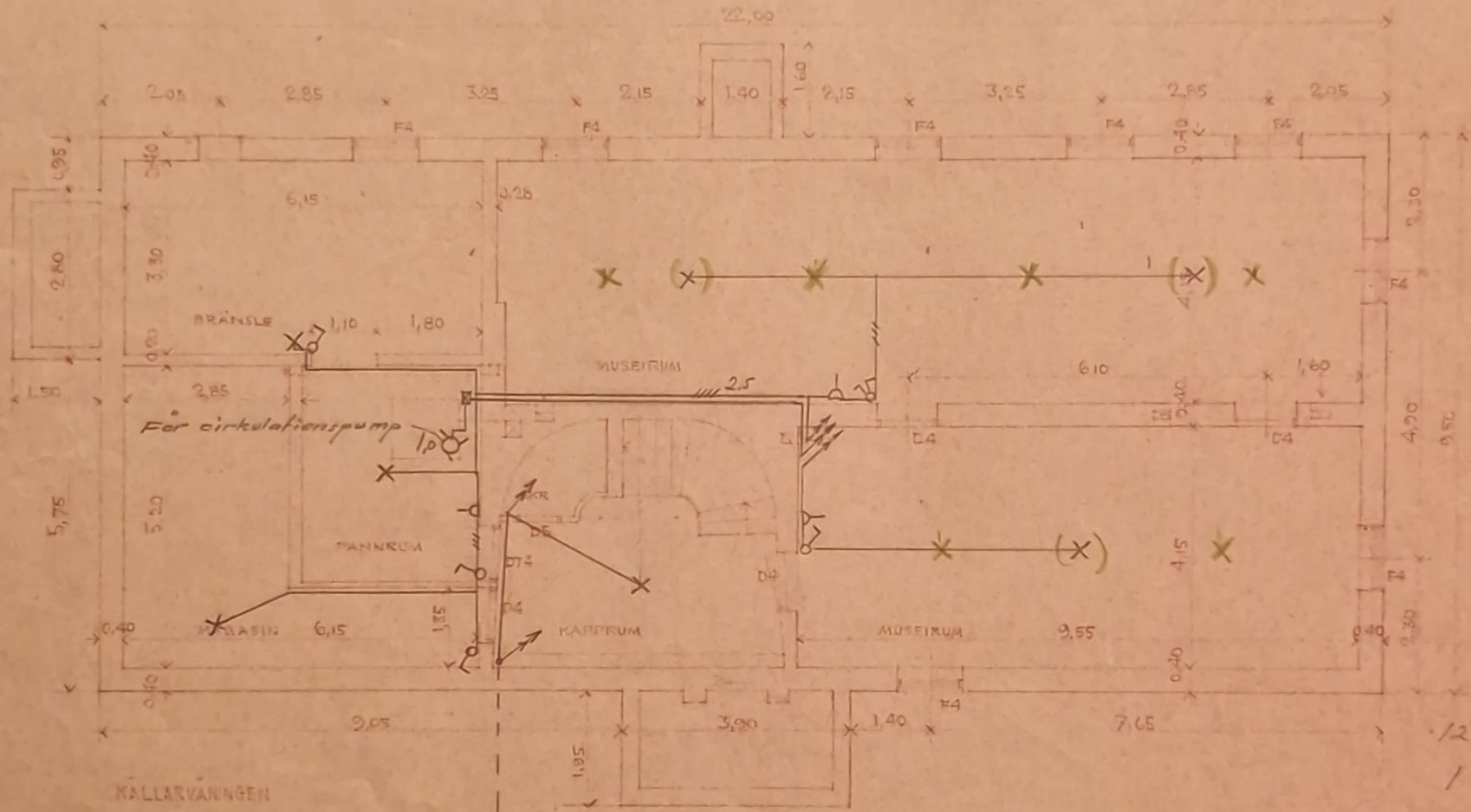
Handwritten text at the bottom of the page, possibly a signature or title.



Antverksmuseet i Stadsberget, Lundsall

7 km op. dit

HANTVERNSMUSEUM Å N. STADSBERGET, SUNDSVALL



12 ljögrenar à 75 W var = 900
1 matris à 1000 W.

Se my ritning av 6/1 44

A. HAMRIN
ARKITEKT S.A.R.
SUNDSVALL
DEN 4.2.1943

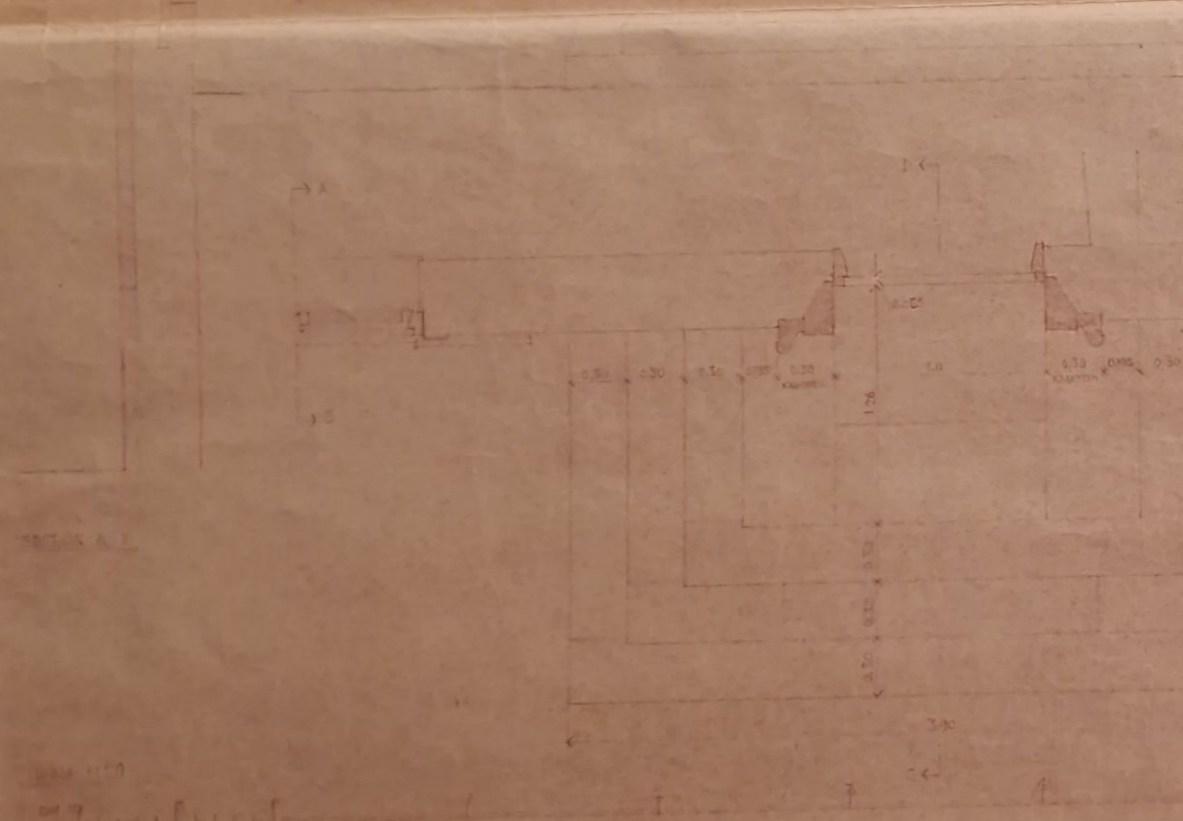
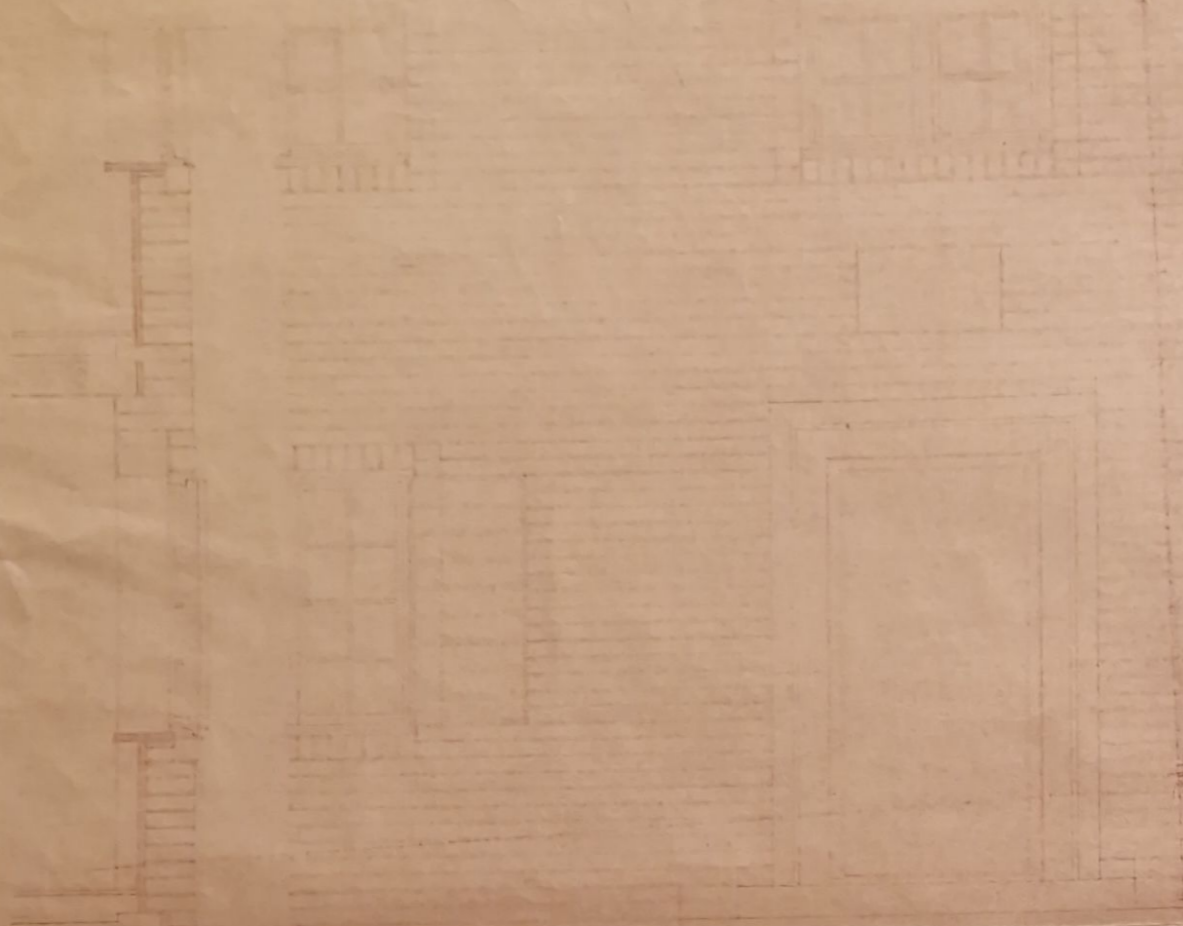
Tvénne belysningsstolpar på plenen
max 100 W var vardera.

Jordkabel.

1:100

HANTVERKSMUSEUM A. N. STADSBERG, SUNDSVALL

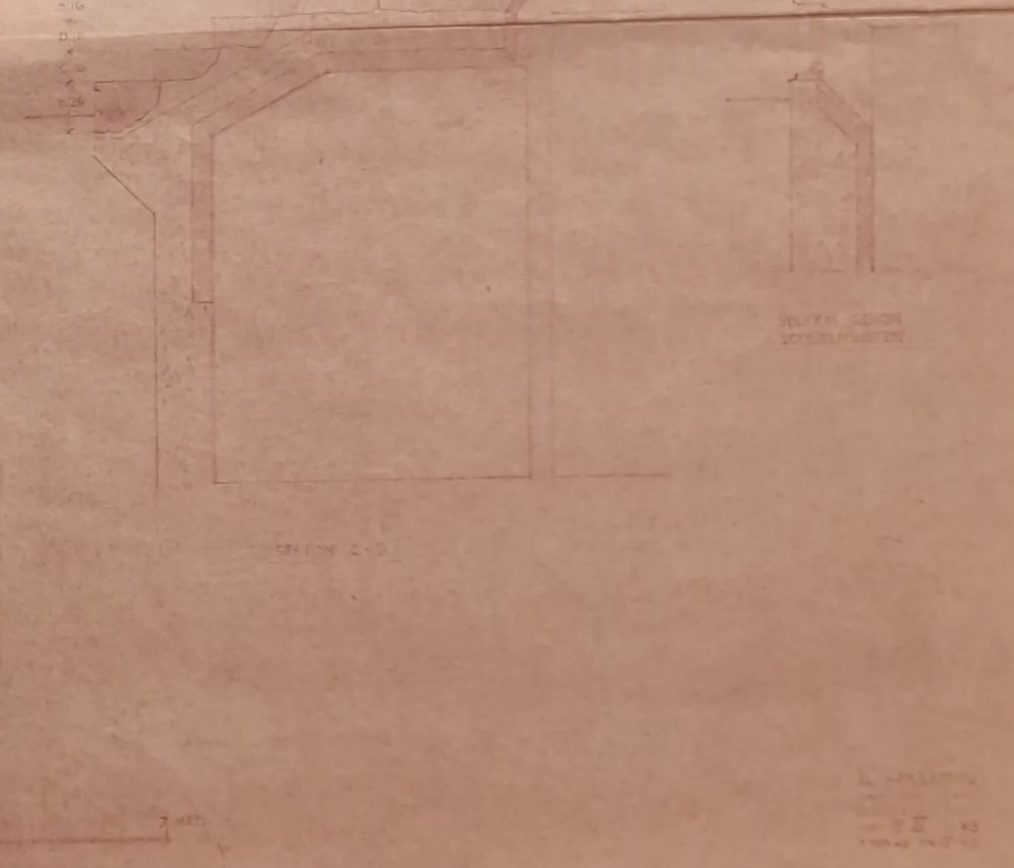
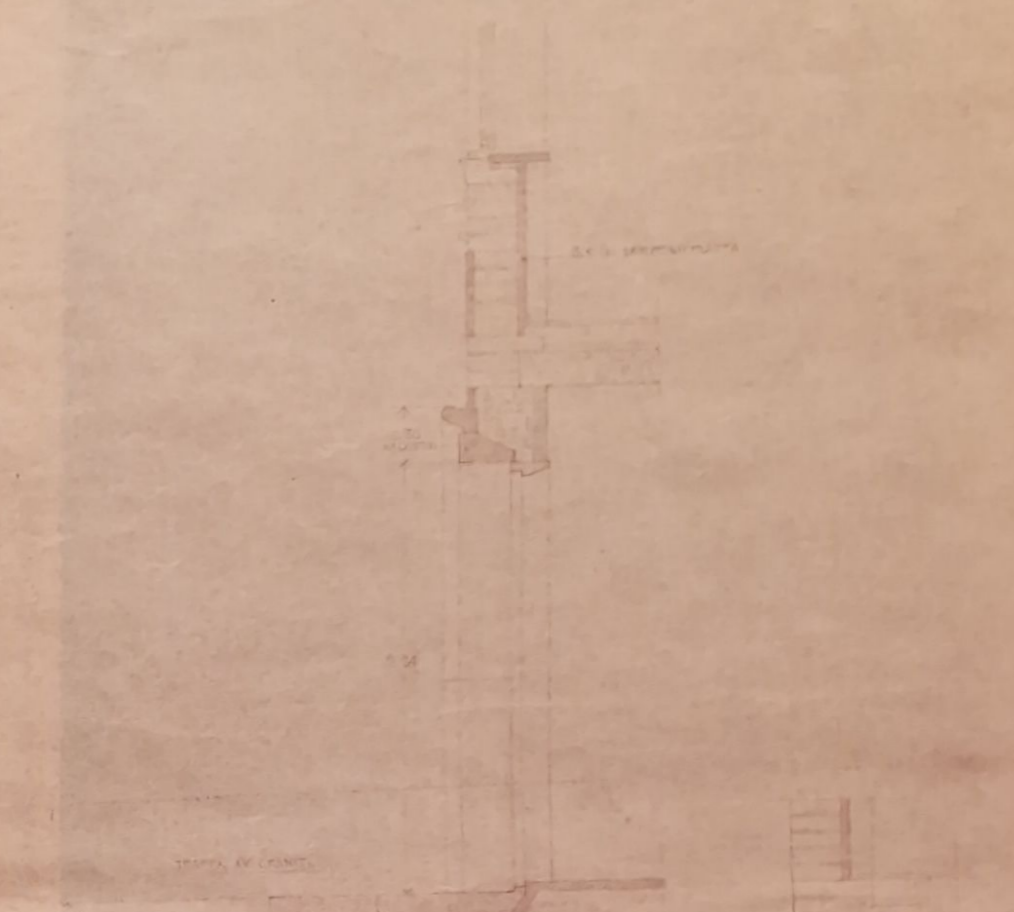
PLAN OF INTERIORS



PLAN A-B

PLAN C-D

PLAN E-F



TRAPPA AV GRANIT

ST. S. BEHÄLLNING

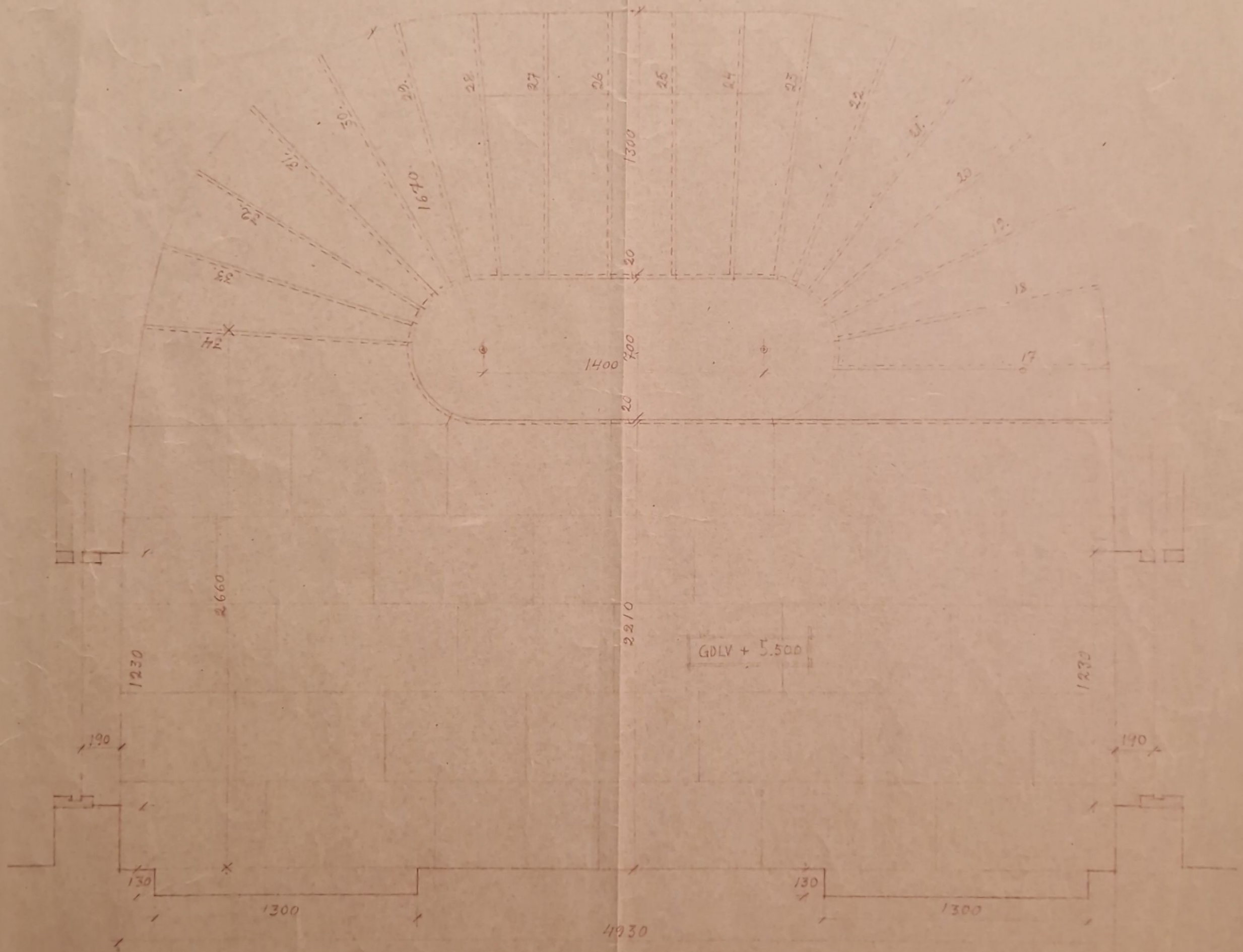
ST. S. BEHÄLLNING

ST. S. BEHÄLLNING

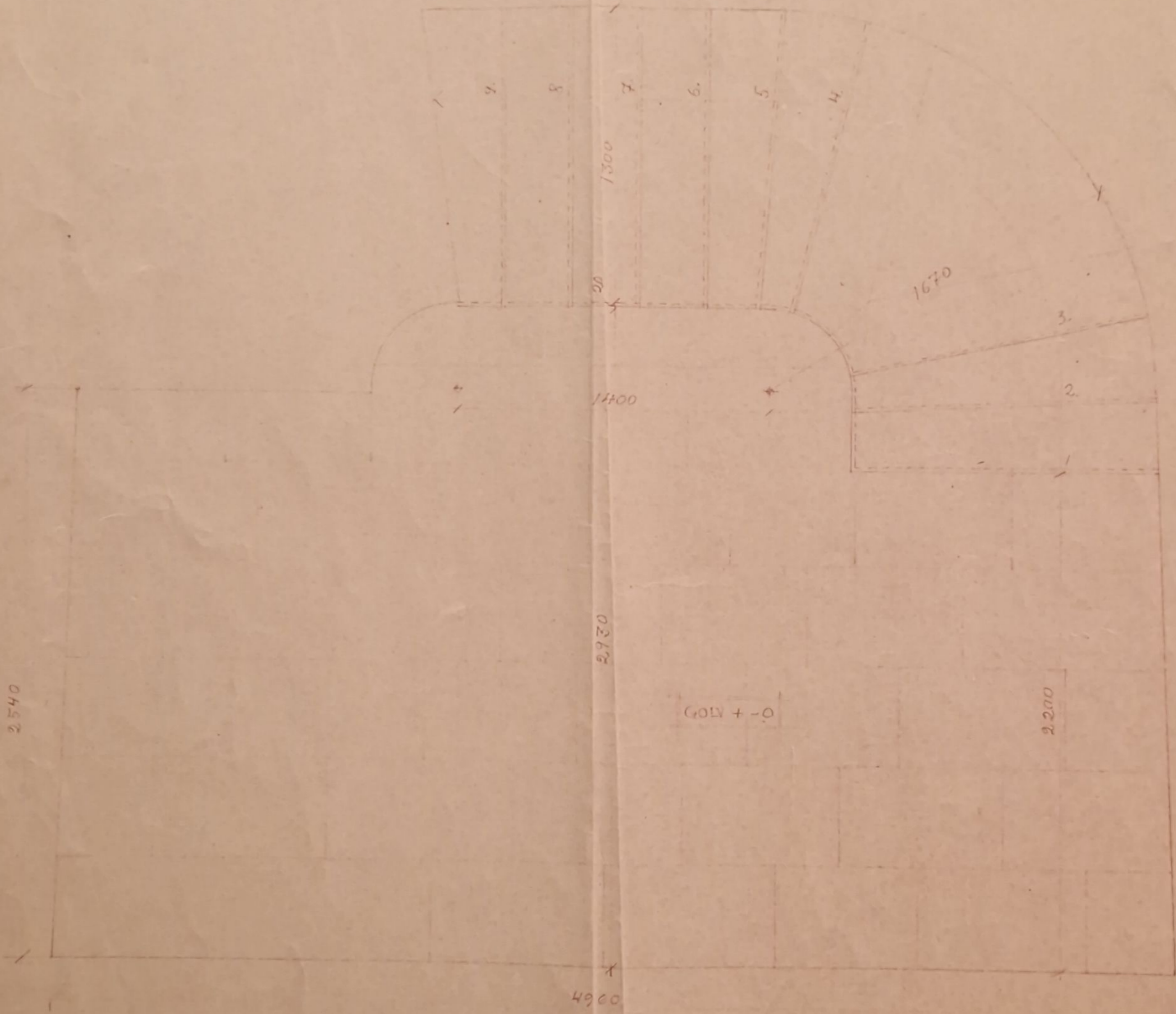
HANTVERKSMUSEUM I SUNDSVALL. HUVUDTRAPPA.

VÄN | TR.

SKALA 1:20



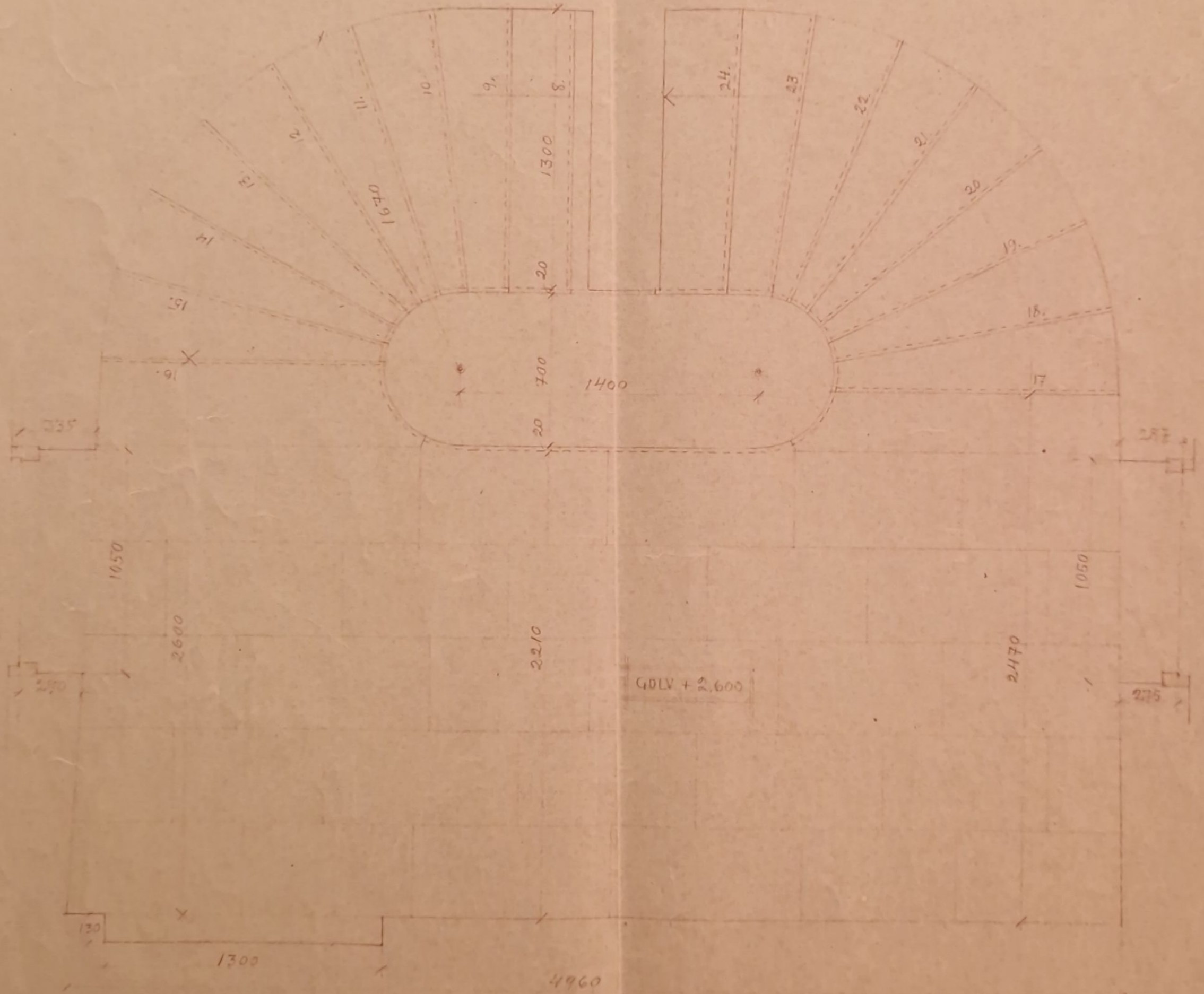
UNIVERSITY OF SUNDSVALL
1944



A. HANSEN
SUNDSVALL
1944

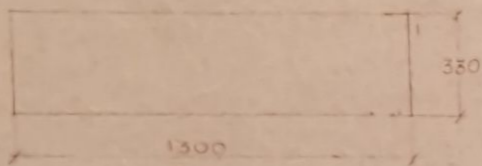
HANTVERKSMUSEUM I SUNDSVALL. HUVUDTRÄFFA.
POTTENVÄNINGEN

SKALA 1:20



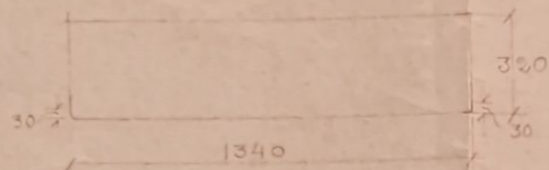
A. HARRIN
SUNDSVALL
1944

FÖNSTERBÄNK TYP A. 16 ST.



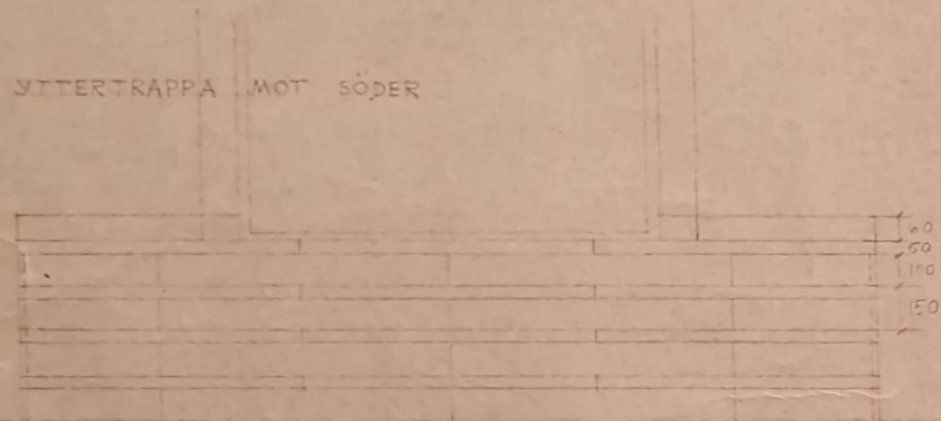
FRÄMKANTEN SÖRLIG.

FÖNSTERBÄNK TYP B. 8 ST.

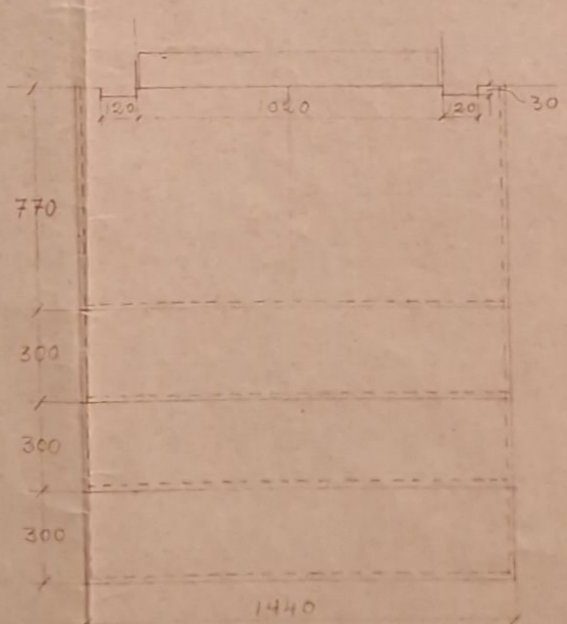
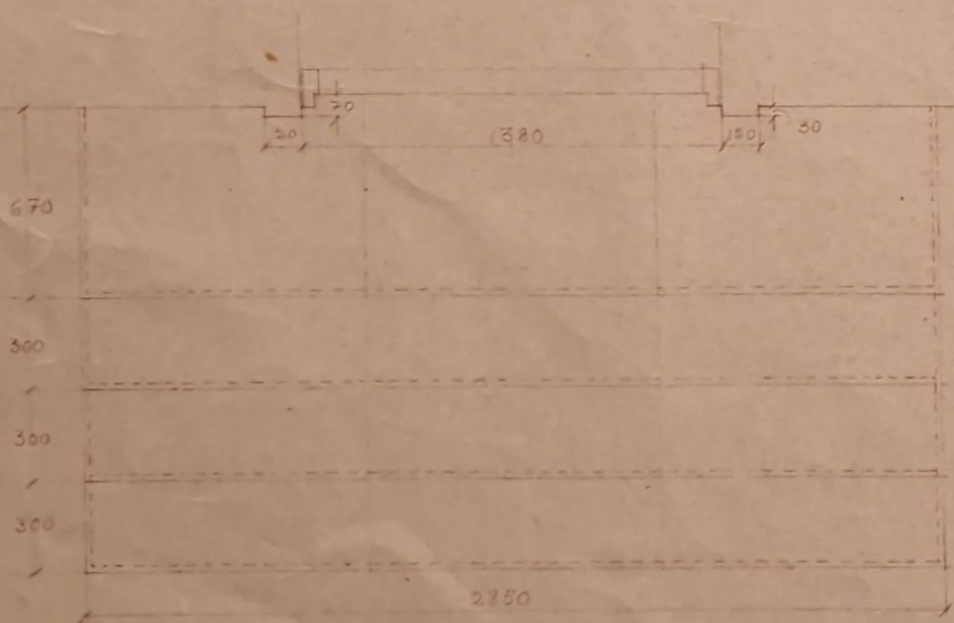
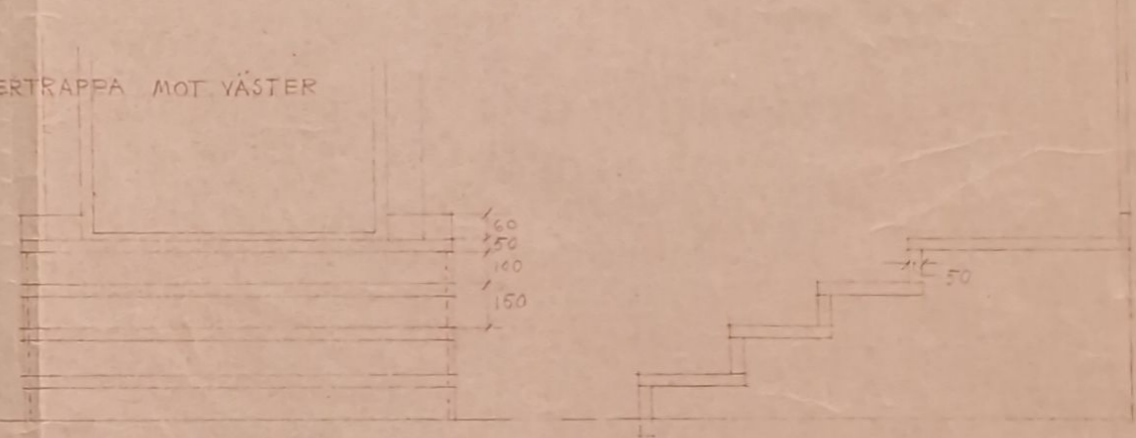


FRÄMKANTEN OCH 30MM AV DE BÅDA ANGRÄNSANDE SIDOKANTERNA SÖNLIGA.

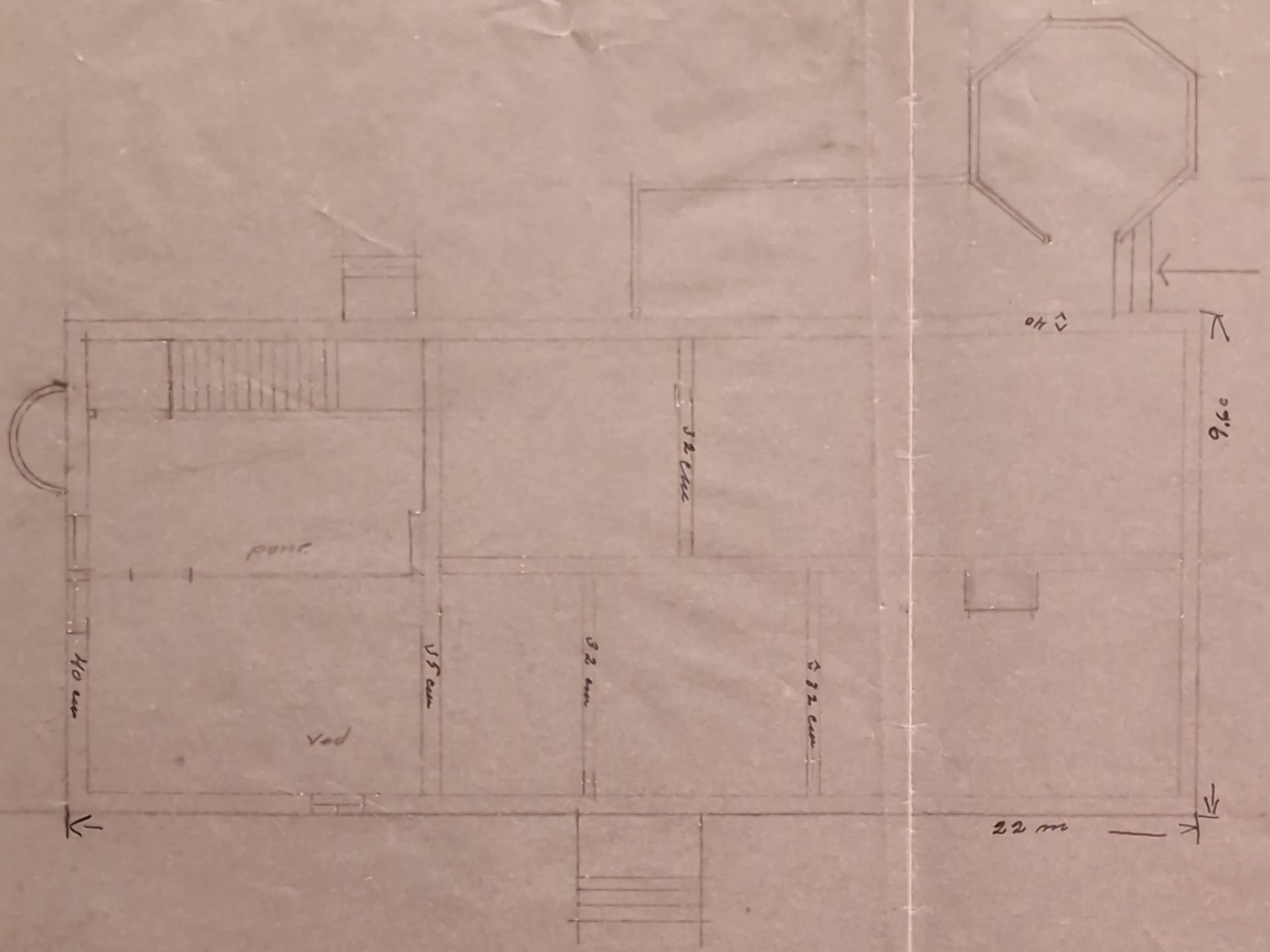
YTTERTRAPPA MOT SÖDER

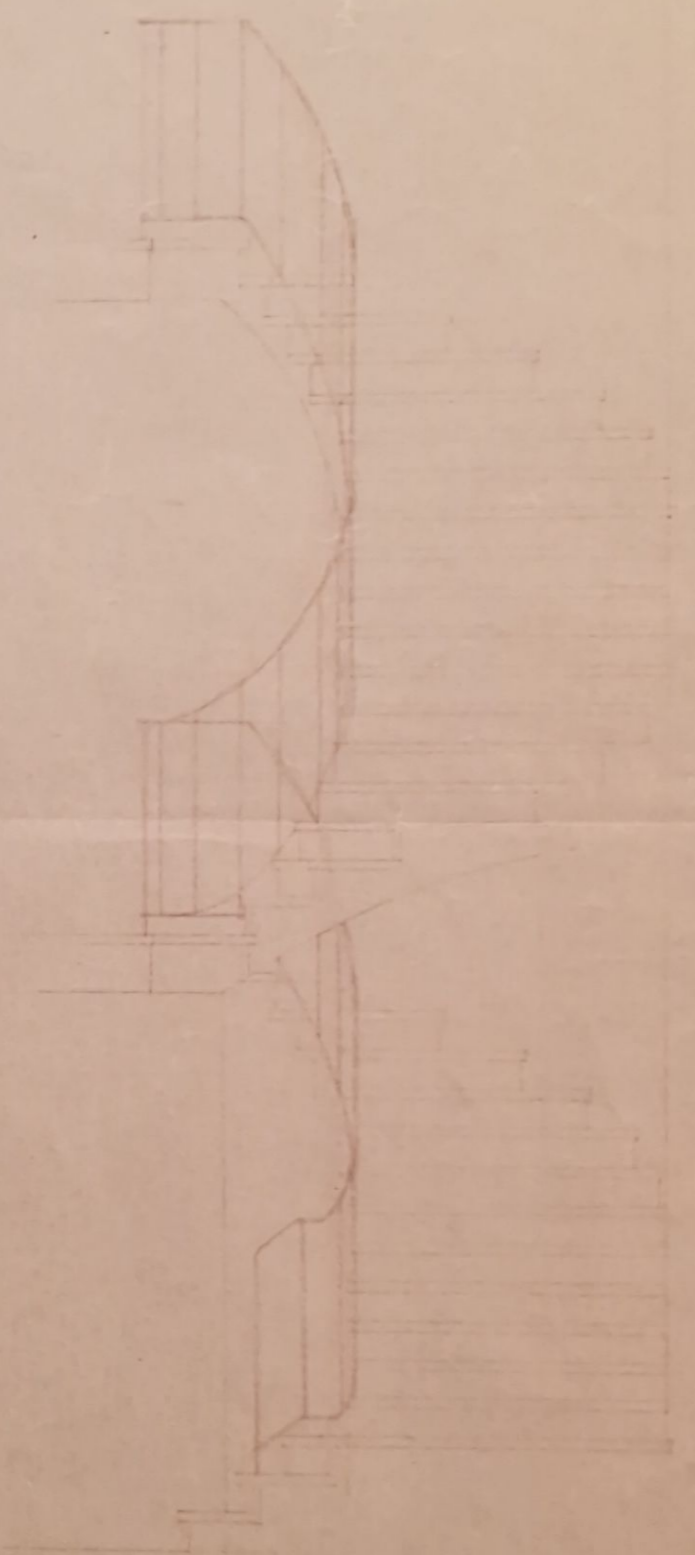
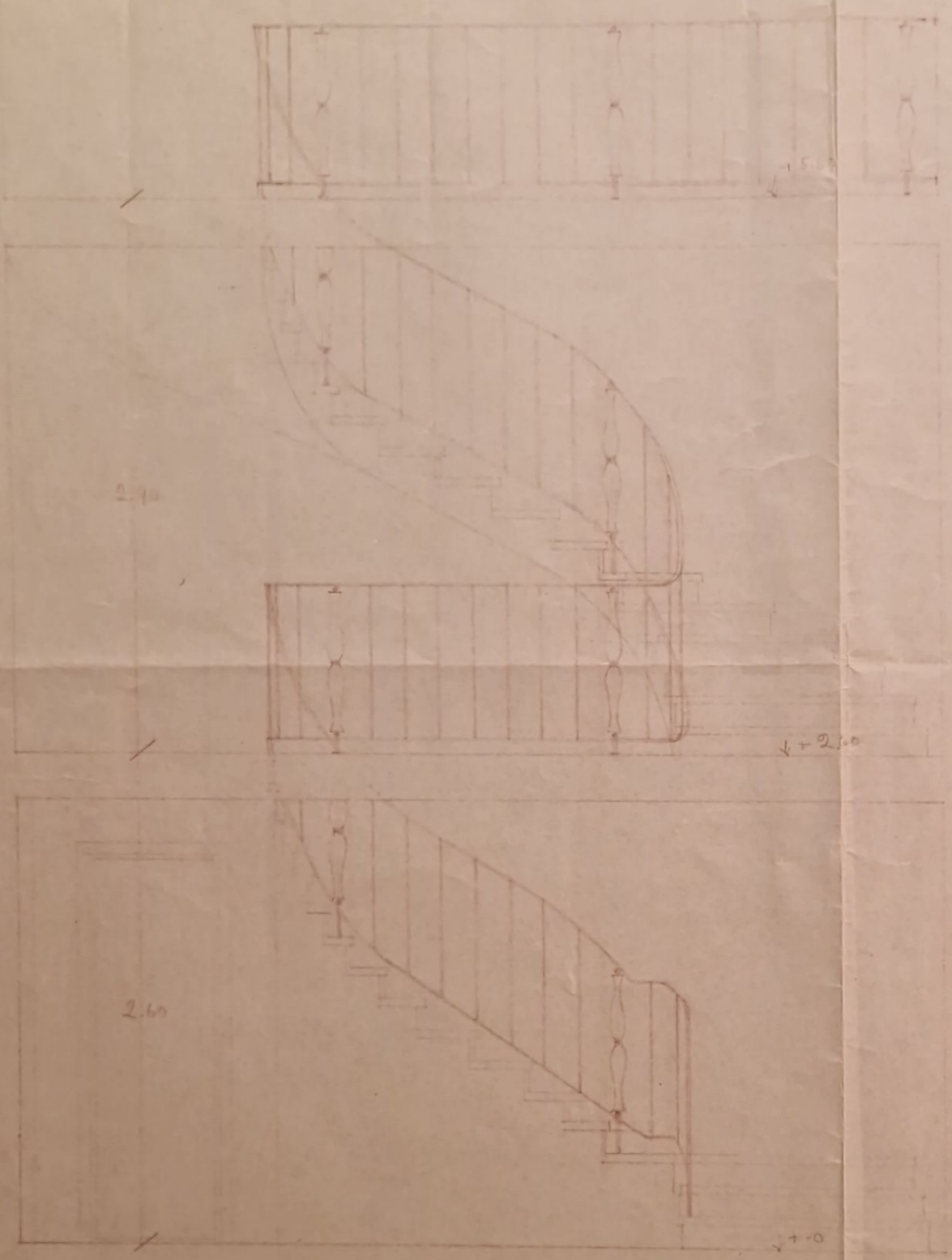


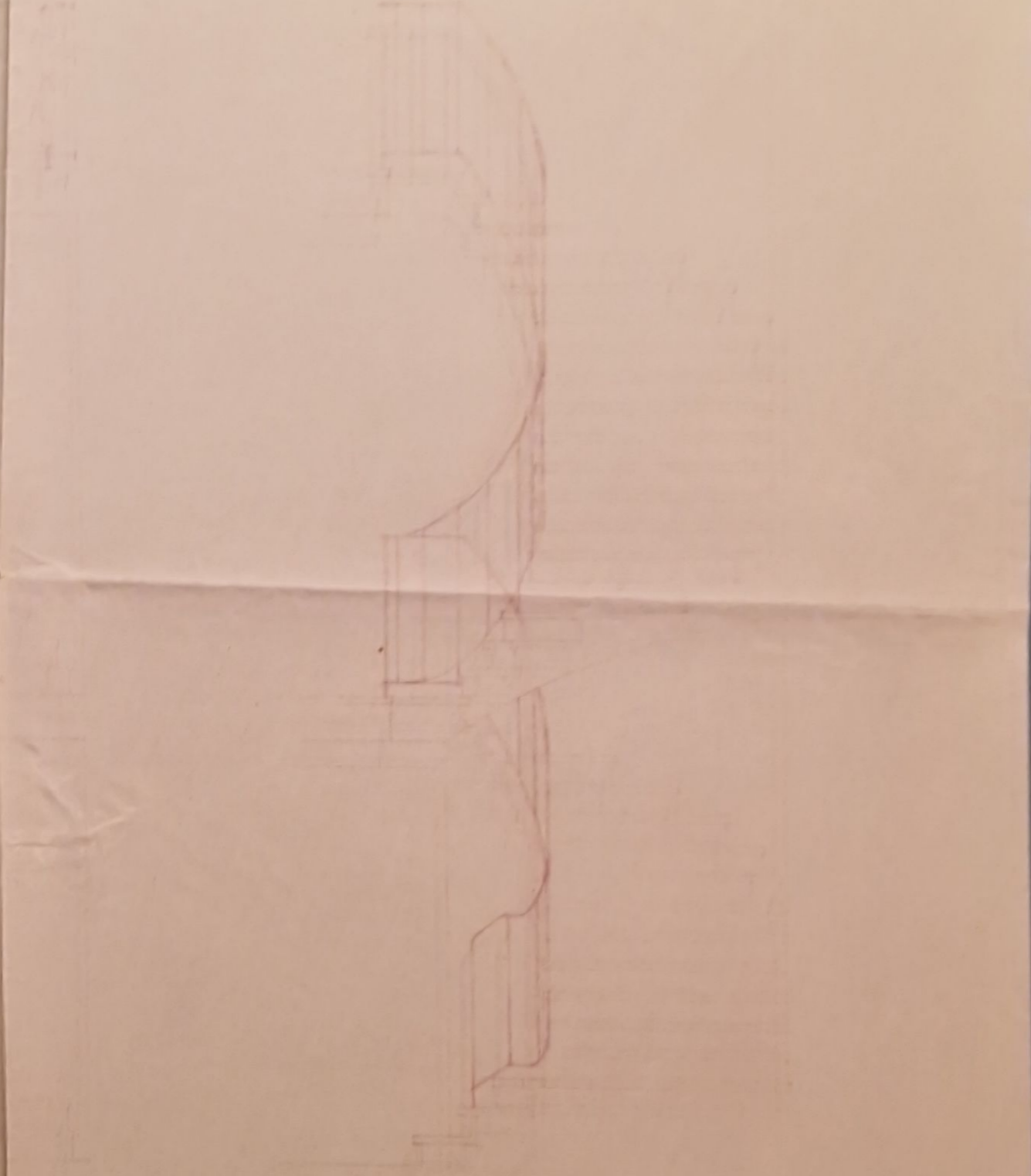
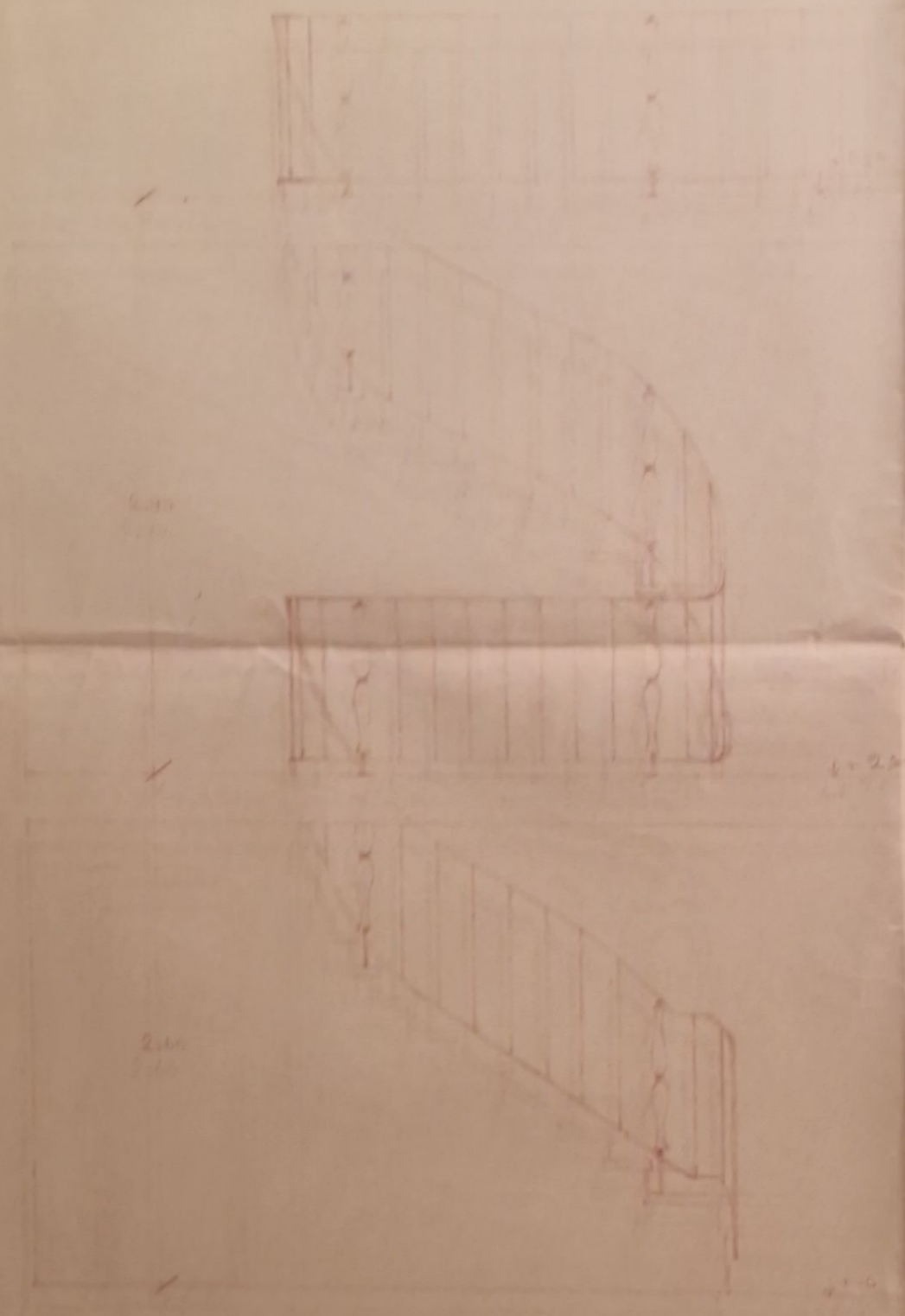
YTTERTRAPPA MOT VÄSTER

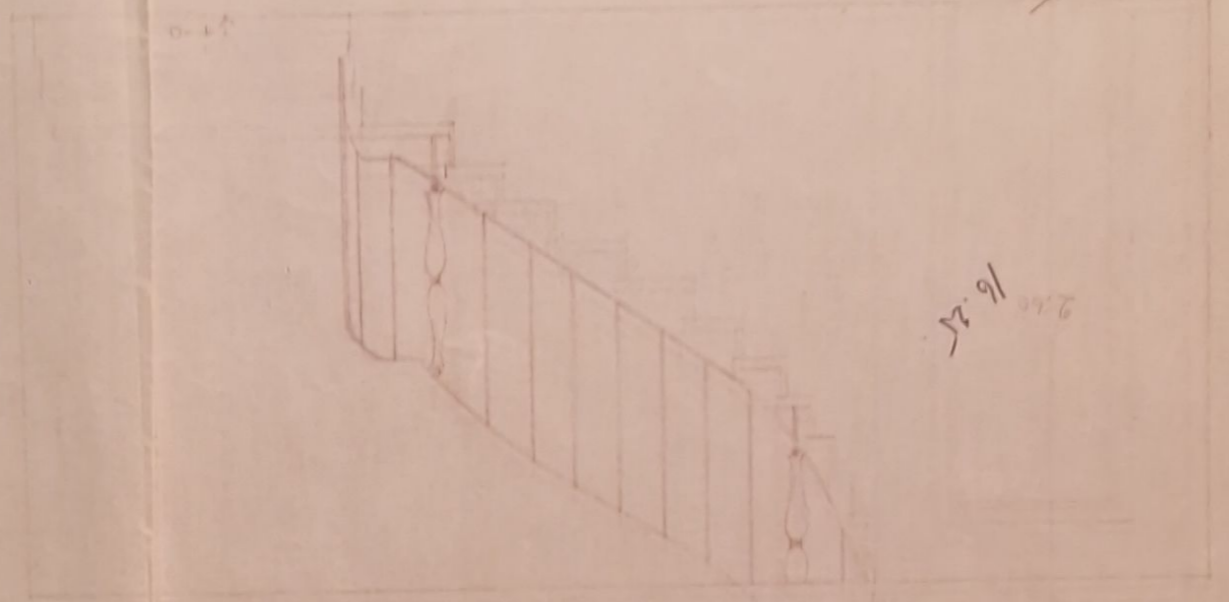
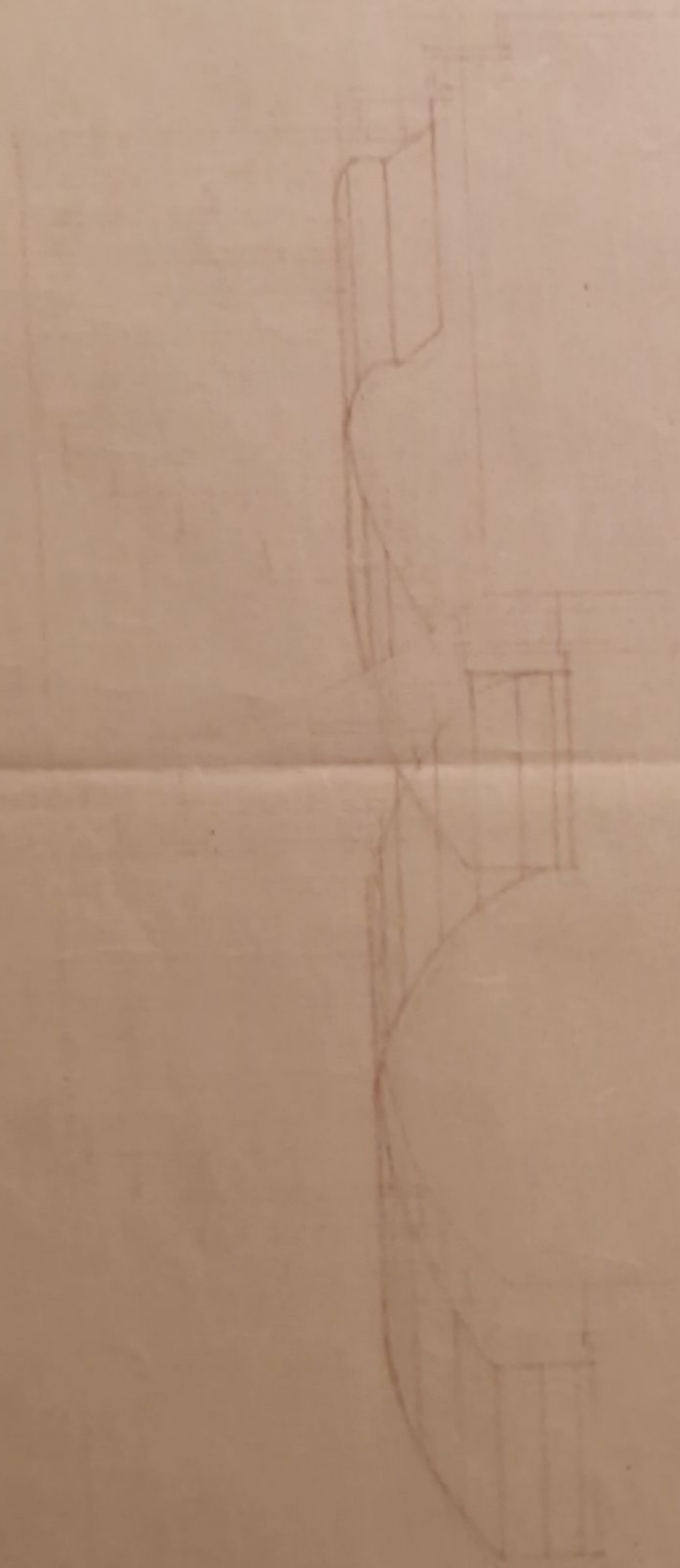


A. HALLIN
SUNDSVALL
1903

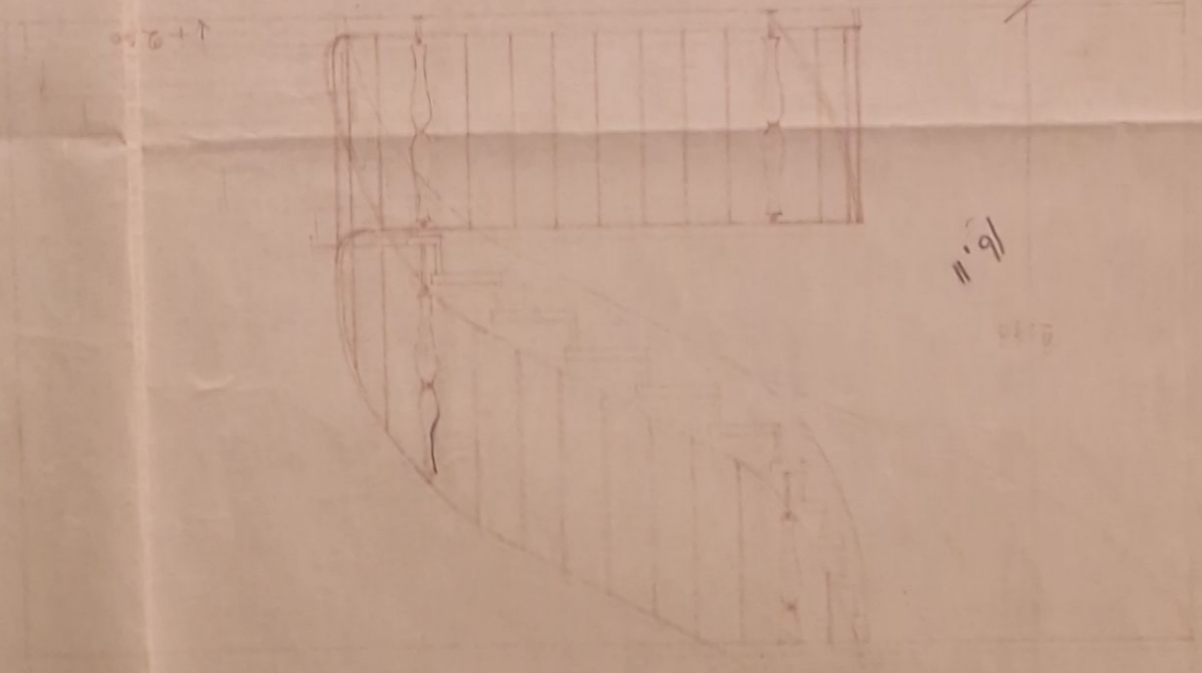




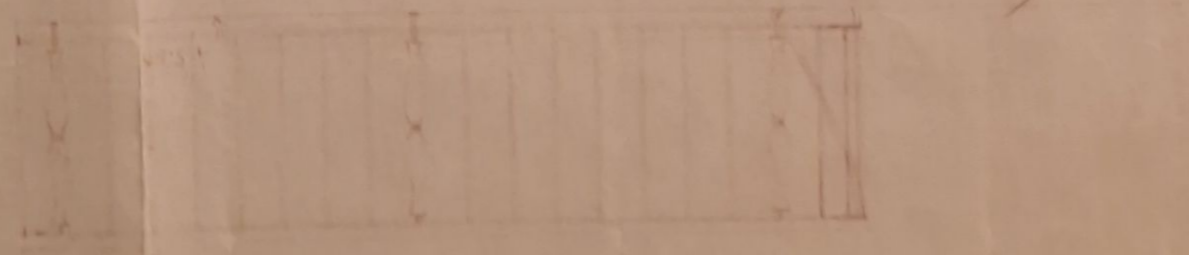




16.25

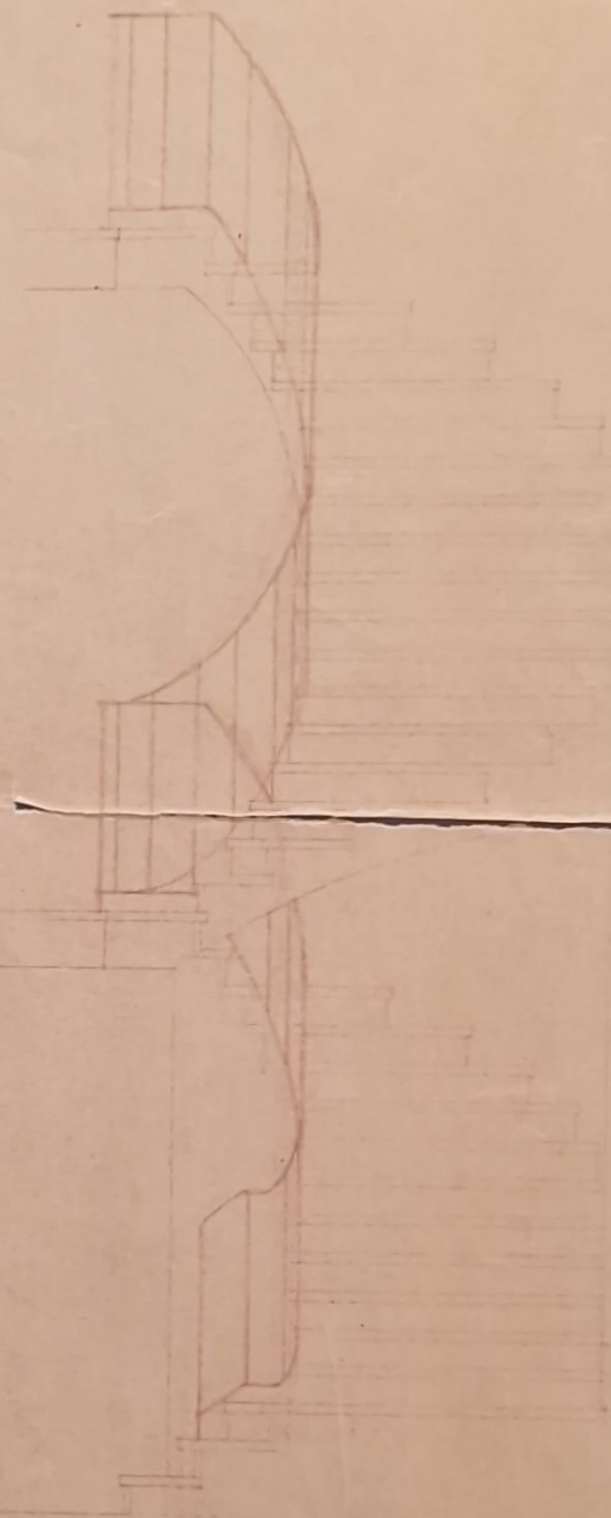


16.11

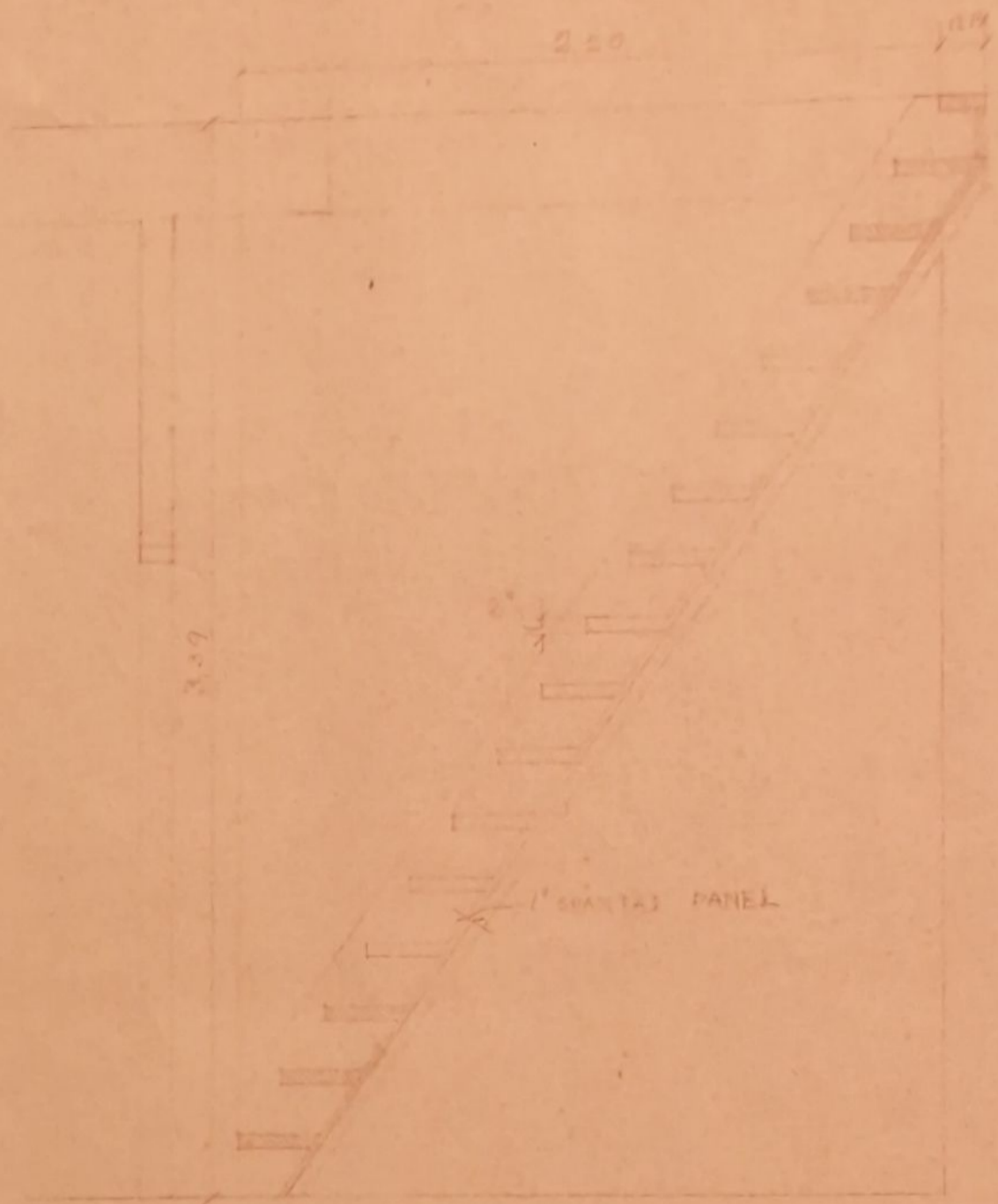


16.1

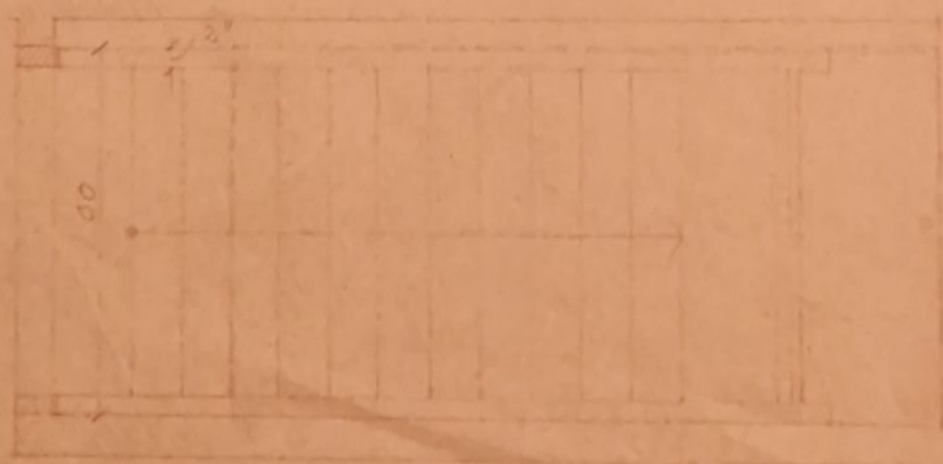
TRAPPA



Naturhistorisk museum, Sundsvall. Vindstoppa.



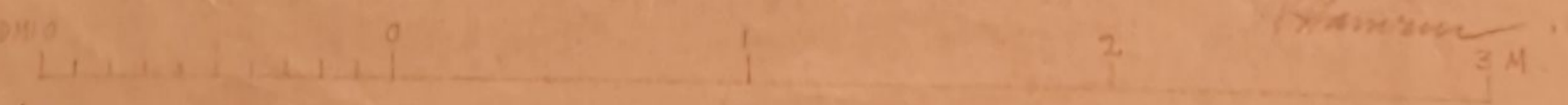
SEKTION



PLAN

SUNDSVALL 26 VII. 1904.

Hammar
34



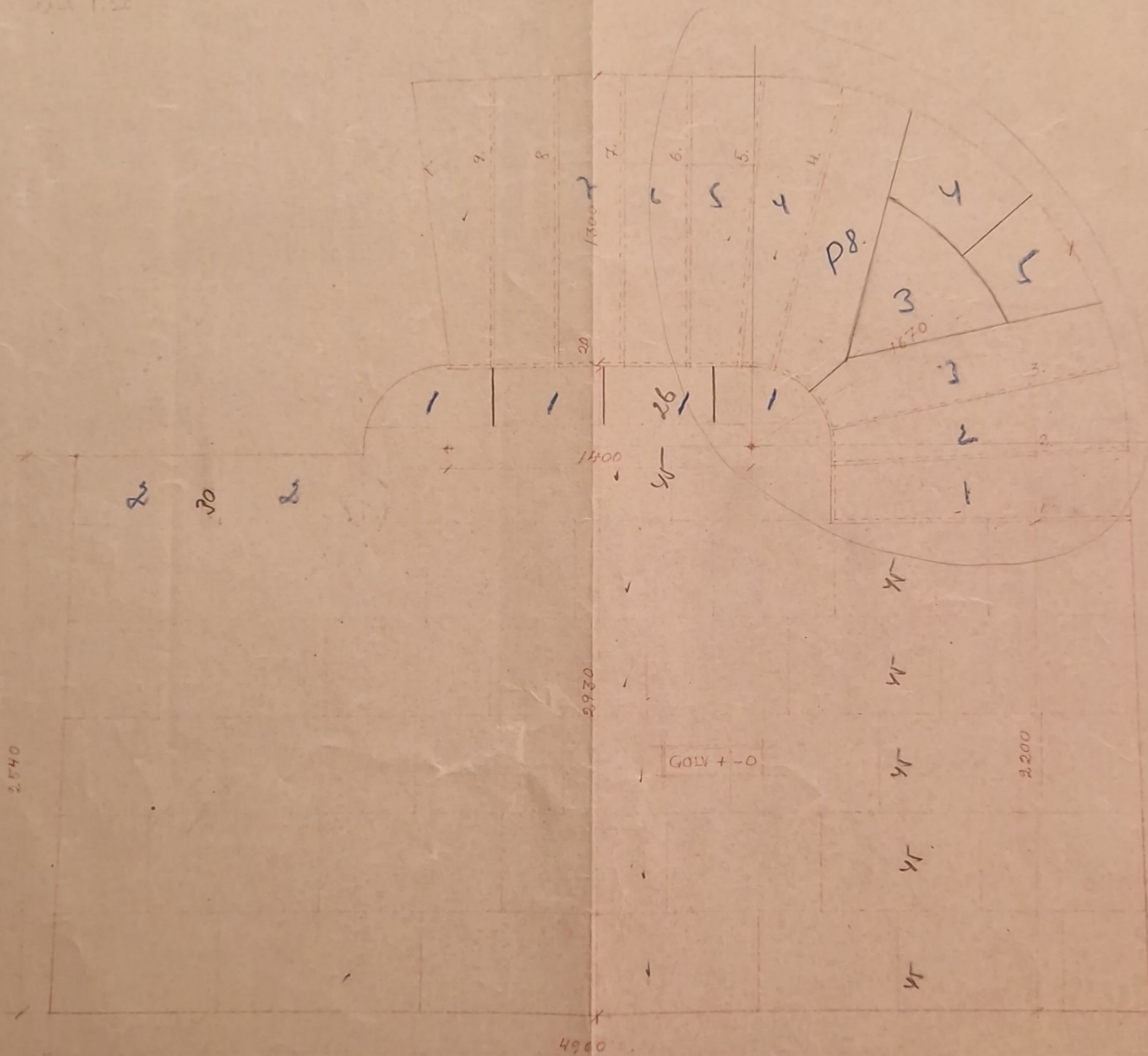
HANTVERKON ST. SV. SUNDSVALL.

FÄLLNÄMNDEN

JAN 1. 20

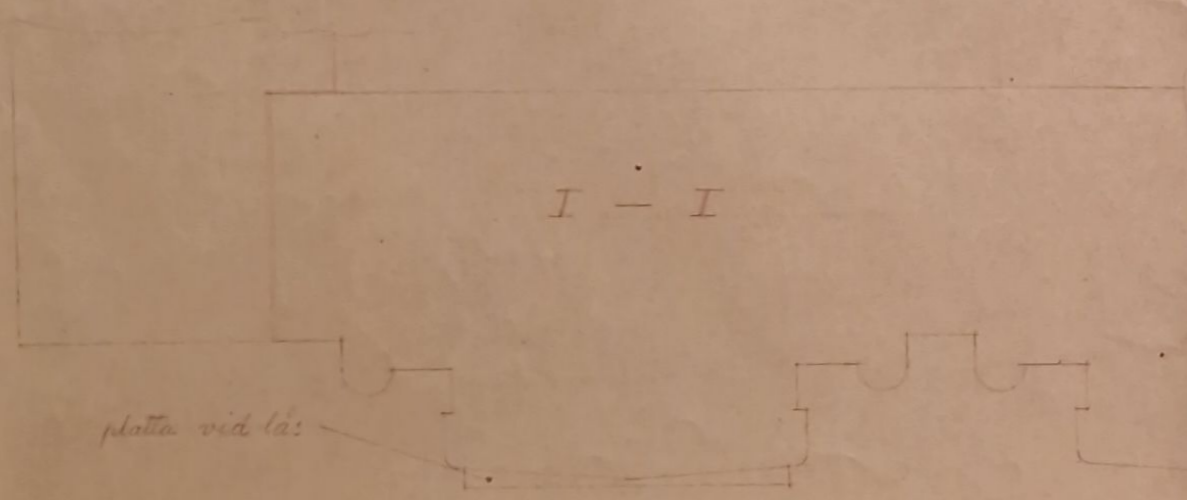
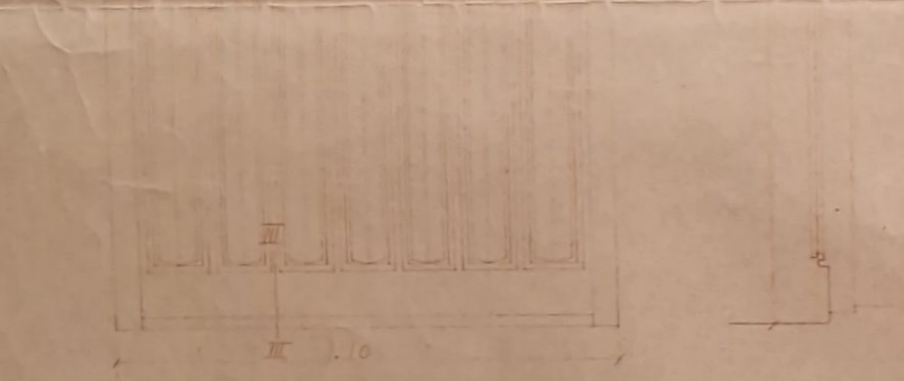
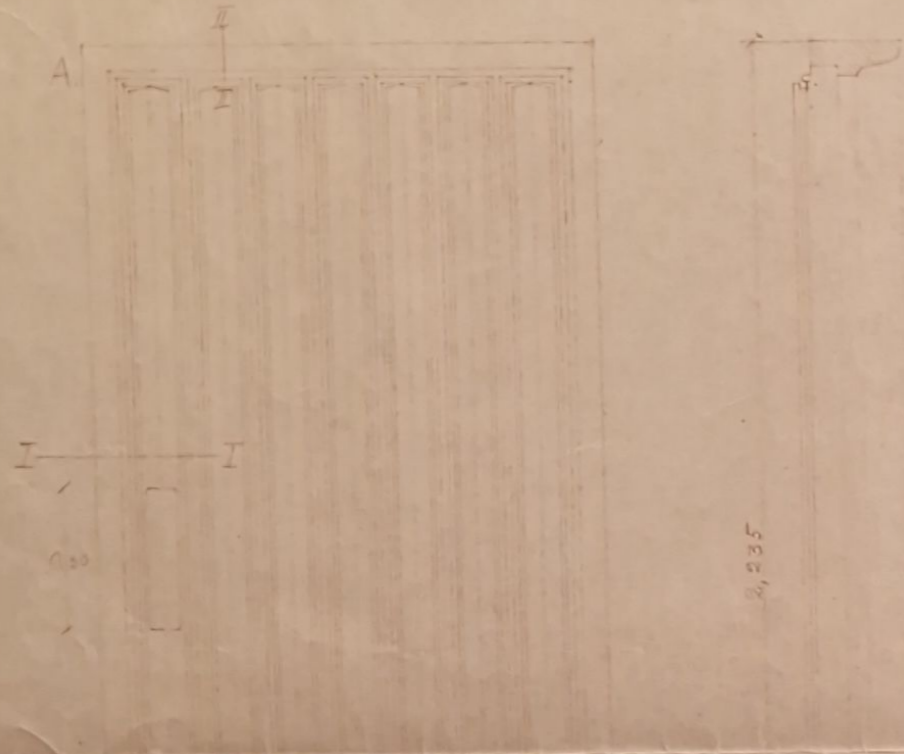
258
222

36

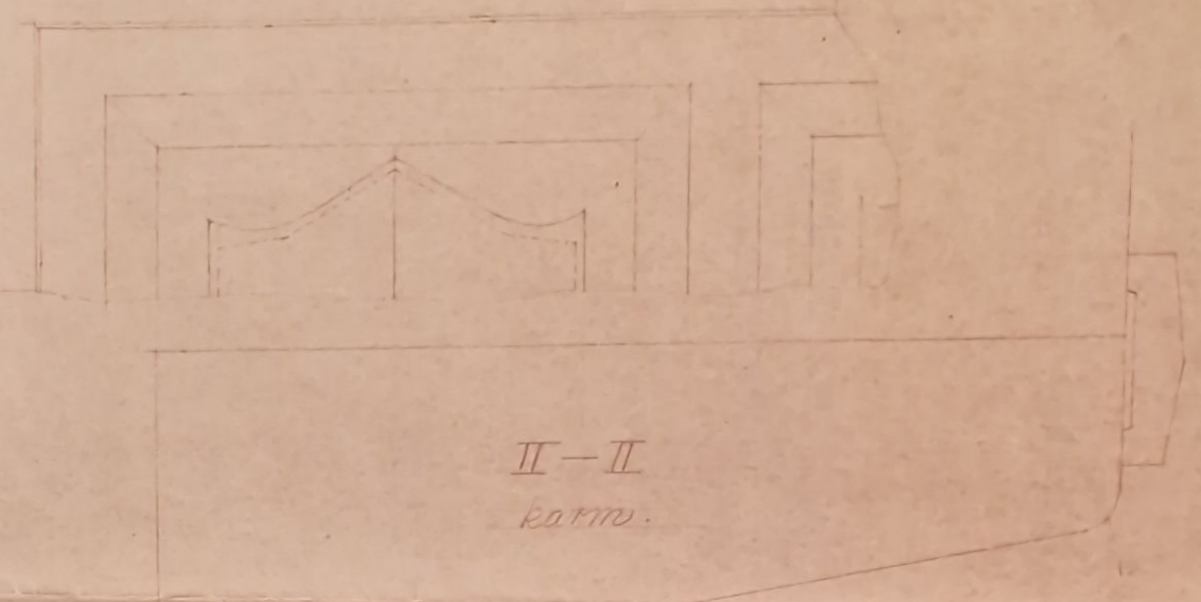


A. HANSEN
ARKITEKT & L.
SUNDSVALL
REV. 4. 1. 20

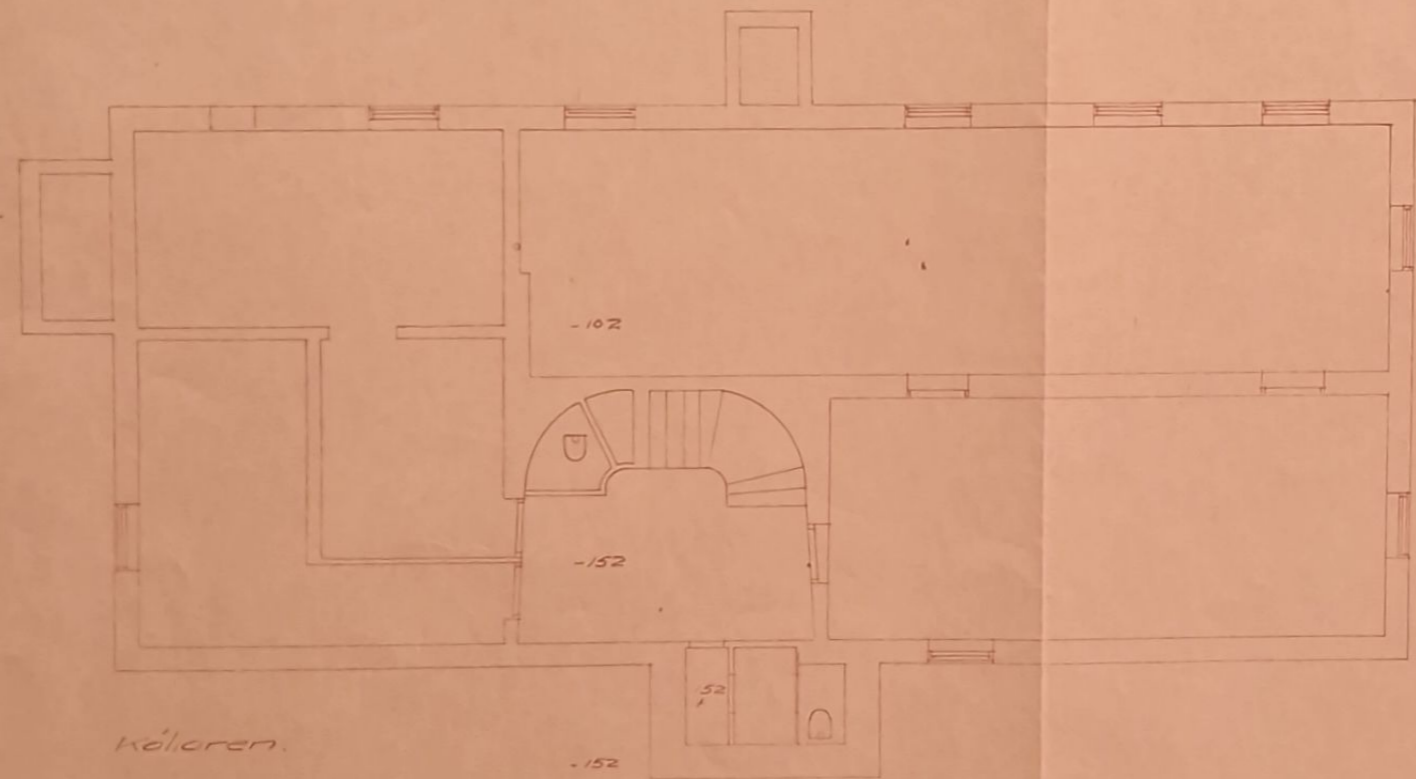
Handverksmuseum, Sundsvall. Ytterdörr.
 Sydliga stor dörr och karm av ek.



detalj vid A.



~ Ritning till V.C.-anläggning i Hantverksmuseet i Sundsvall ~



Källaren.

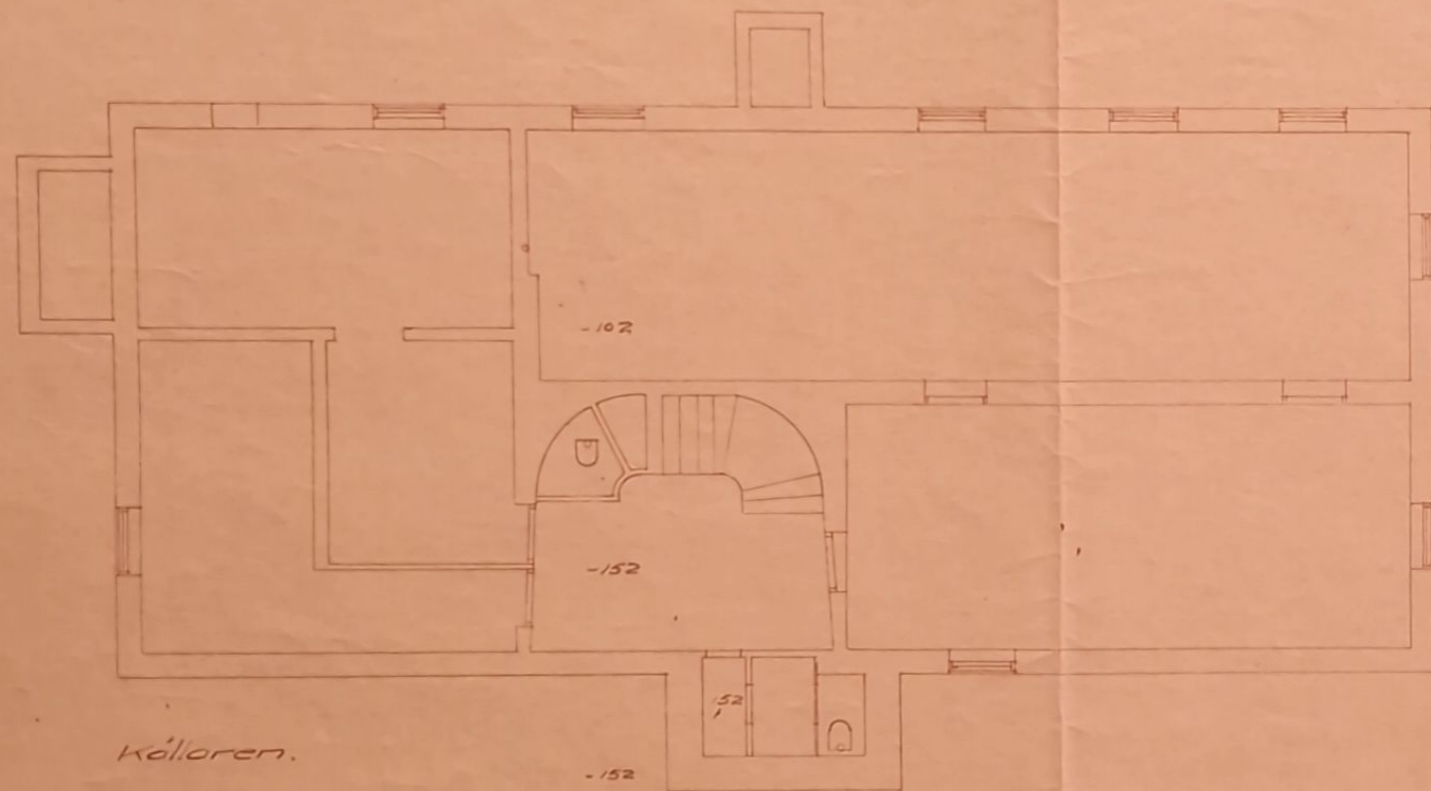


Rörschema

Sundsvall den 20. maj 1943

Skala 1:100

~ Ritning till V.C.-anläggning å Hantverksmuséet i Sundsvall ~



Källaren.

-76 vent.

Rörschema

Sundsvall den 20. maj 1943

Skala 1:100