

★ surface: note hatch marks (photo flag)

★ ans note: can we clean to clarify detail @ head?

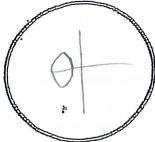
Vasa föremål

Dokumenterad av EA		Datum 1 april 2014	Föremål axe	Fyndnummer 19953
-----------------------	--	-----------------------	----------------	---------------------

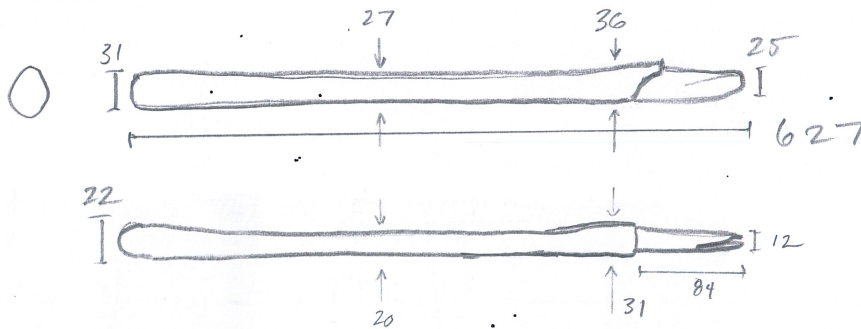
Fyndplats/location

Däck/deck mop	Sida/side port	Balk/beam 4-5	Kanonport/gunport
------------------	-------------------	------------------	-------------------

Material

Träslag/wood type Hard	Conversion
Fiberriktning/grain straight	

Skiss



see attached for detail

Dimensioner (mm)

A	B	C	D	E	F	G	H	J
K	L	M	N	P	Q	R	S	T

Skador/damage in very good condition overall - some surface erosion, but almost no apparent distortion. some splitting @ head likely from wedge (no evidence wedge is still in place)

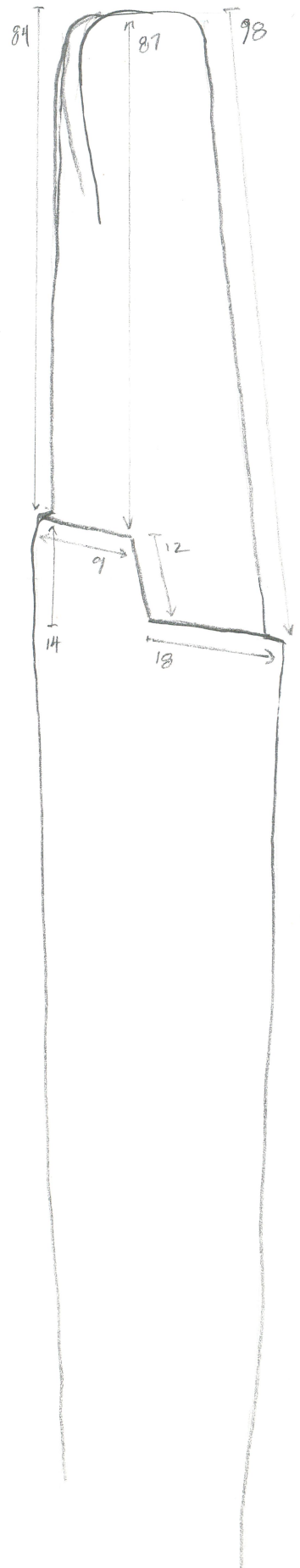
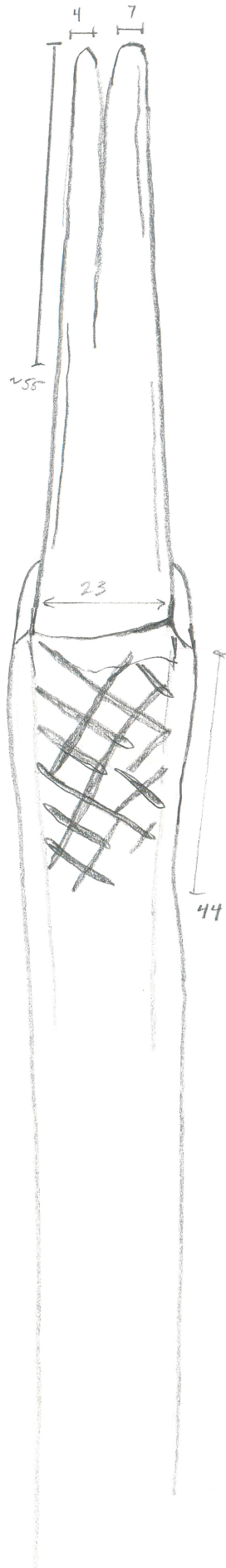
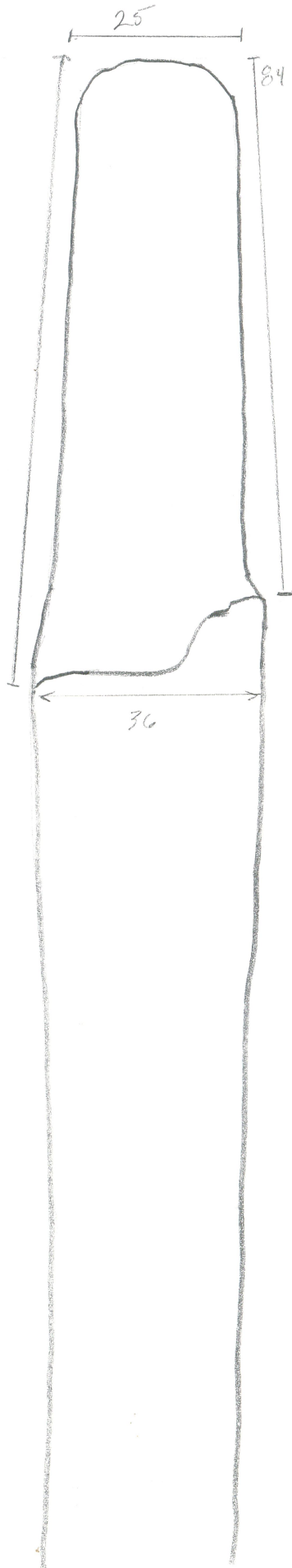
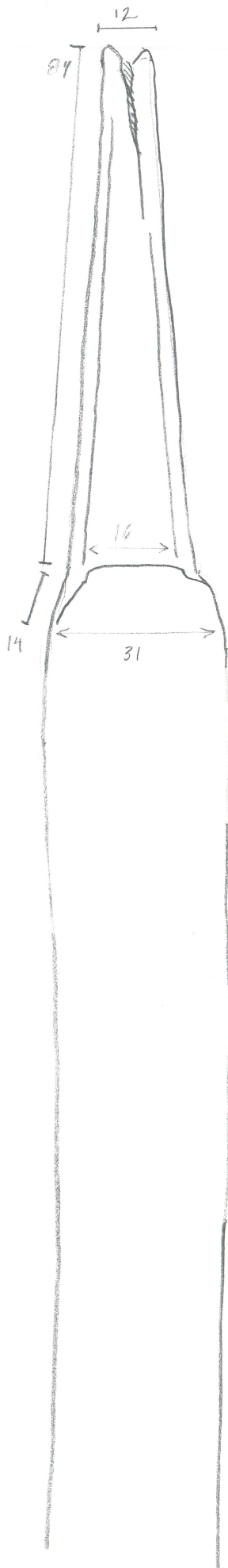
Kommentar/comments Carve ax handle: evidence of tool marks obscured by pegs erosion - oval, tapers @ head end, steps down to receive head. v. clear hatch marks on one face. 4 sided split @ head end suggests wedge.

Association

Andra delar/other parts

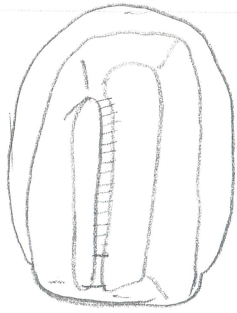
Relaterade fynd/related finds

Tool
19953
1 April 2014
R 1/2



SPD
SPD

Tosw
19953
1 April 2014
A 2/2



end view/profiles

